



Alesis DM Pro

Generic Total Recall Component (GTRC)

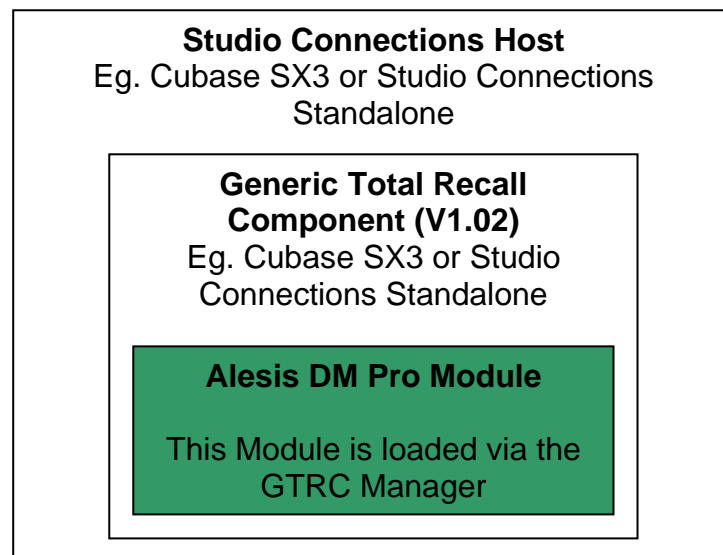
Alesis DM Pro Help File



Introduction

This module is for use with GTRC V 1.02 or later. The latest version of GTRC is available from <http://www.studioconnections.org>.

GTRC is designed as a component for Studio Connections, and this Alesis DM Pro module loads into Studio Connections via the GTRC Component, as per the diagram below.



Installation

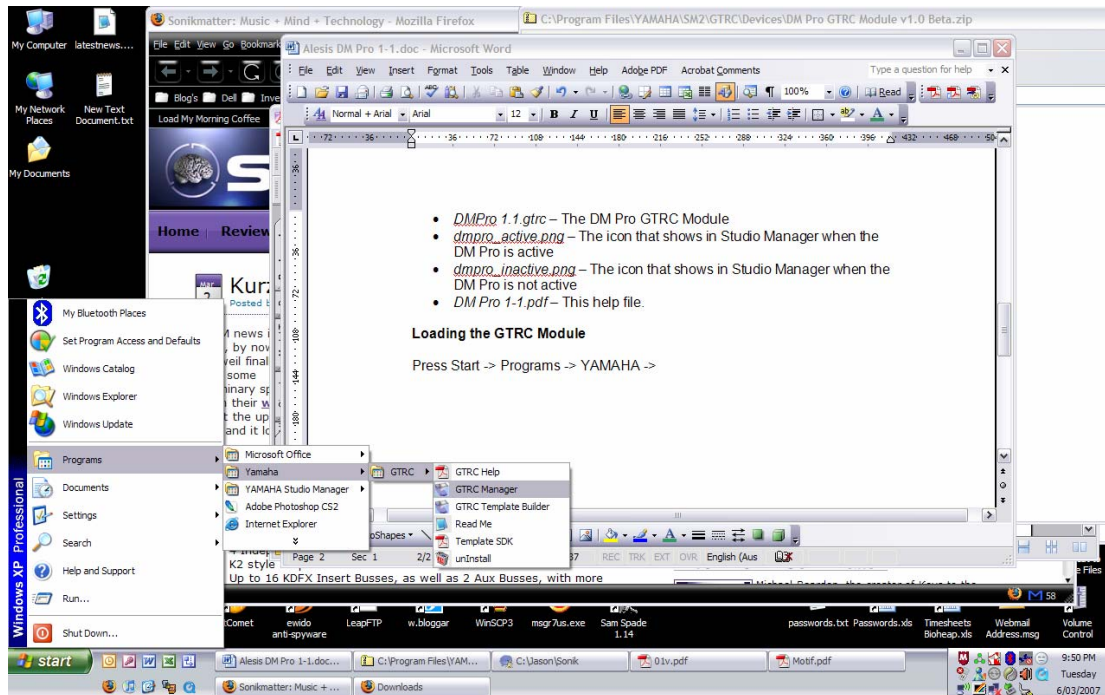
Unzip the complete contents of the *DM Pro GTRC Module v1.1.zip* into the GTRC Devices Folder. The default location for this is C:\Program Files\YAMAHA\SM2\GTRC\Devices.

The following files should be installed

- *DMPPro 1.1.gtrc* – The DM Pro GTRC Module
- *dmpo_active.png* – The icon that shows in Studio Manager when the DM Pro is active
- *dmpo_inactive.png* – The icon that shows in Studio Manager when the DM Pro is not active
- *DM Pro 1-1.pdf* – This help file.

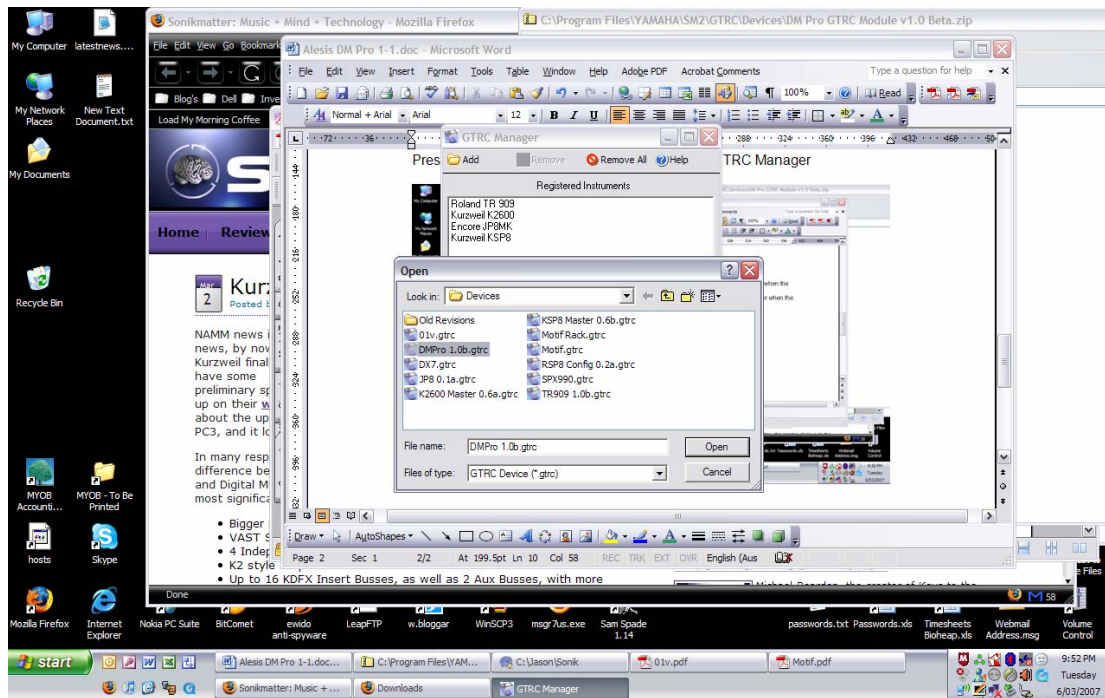
Loading the GTRC Module

Press Start -> Programs -> Yamaha -> GTRC -> GTRC Manager

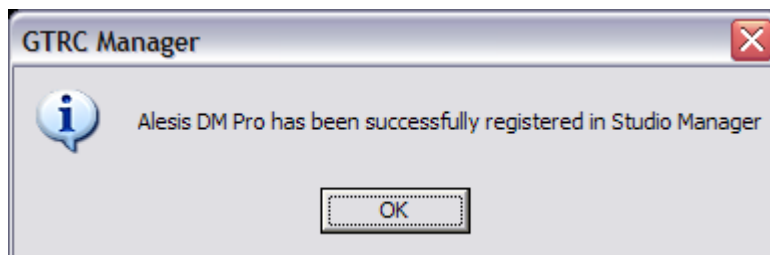


When the GTRC Manager window opens click “Add”

Select the *DMPPro V 1.1.gtrc* file, and click “Open”



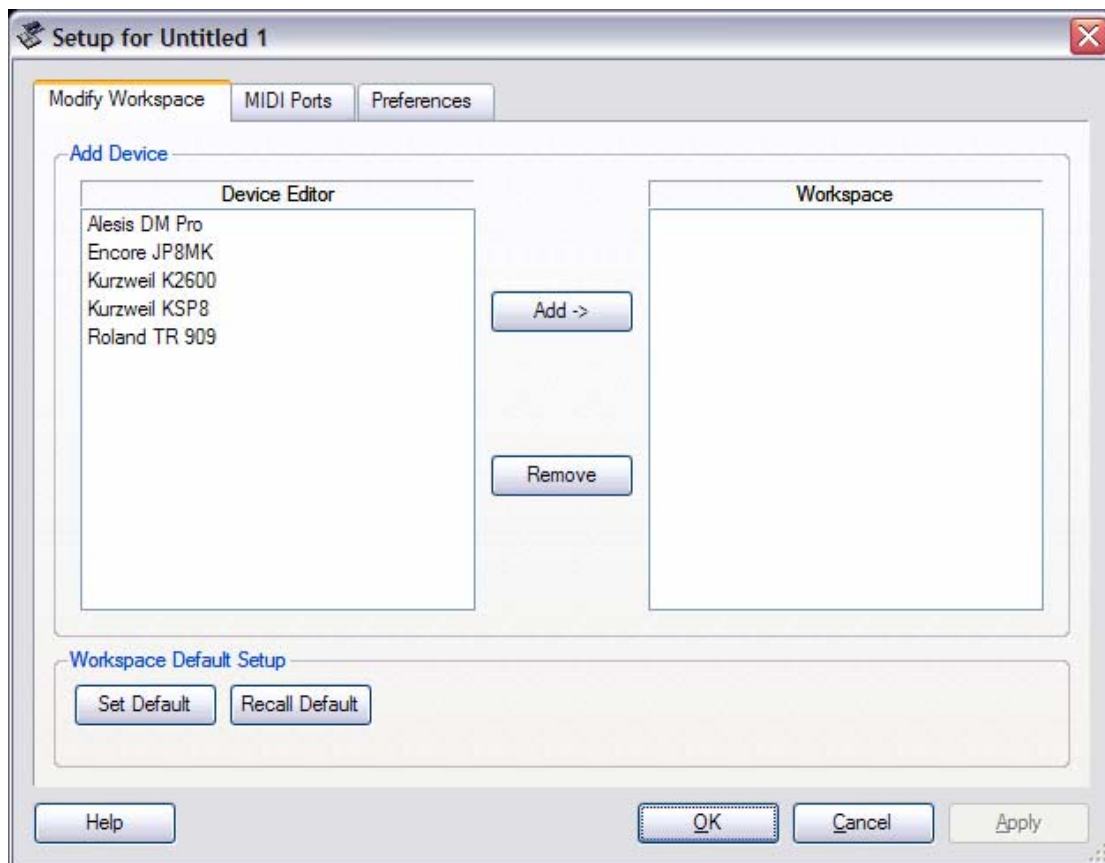
A notification window should appear informing you that the GTRC module has been successfully loaded.



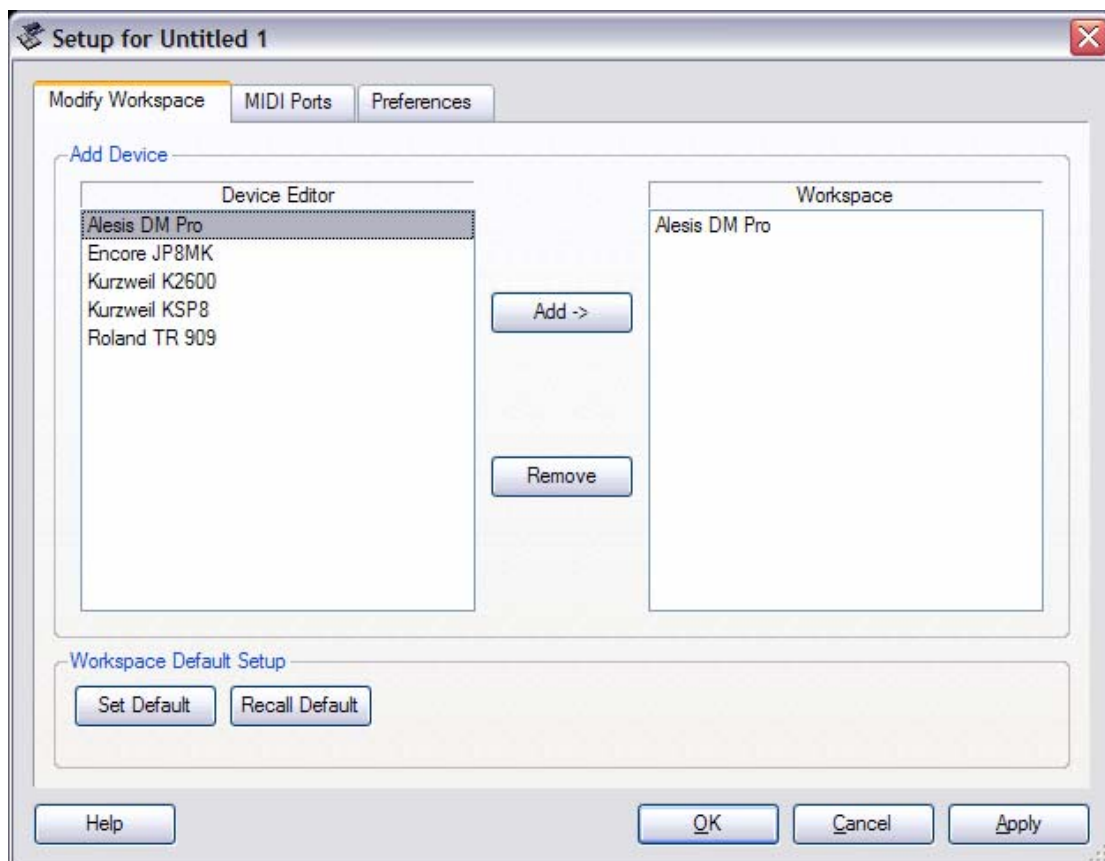
Close the GTRC Manager, or load other modules.

Configuring Studio Connections

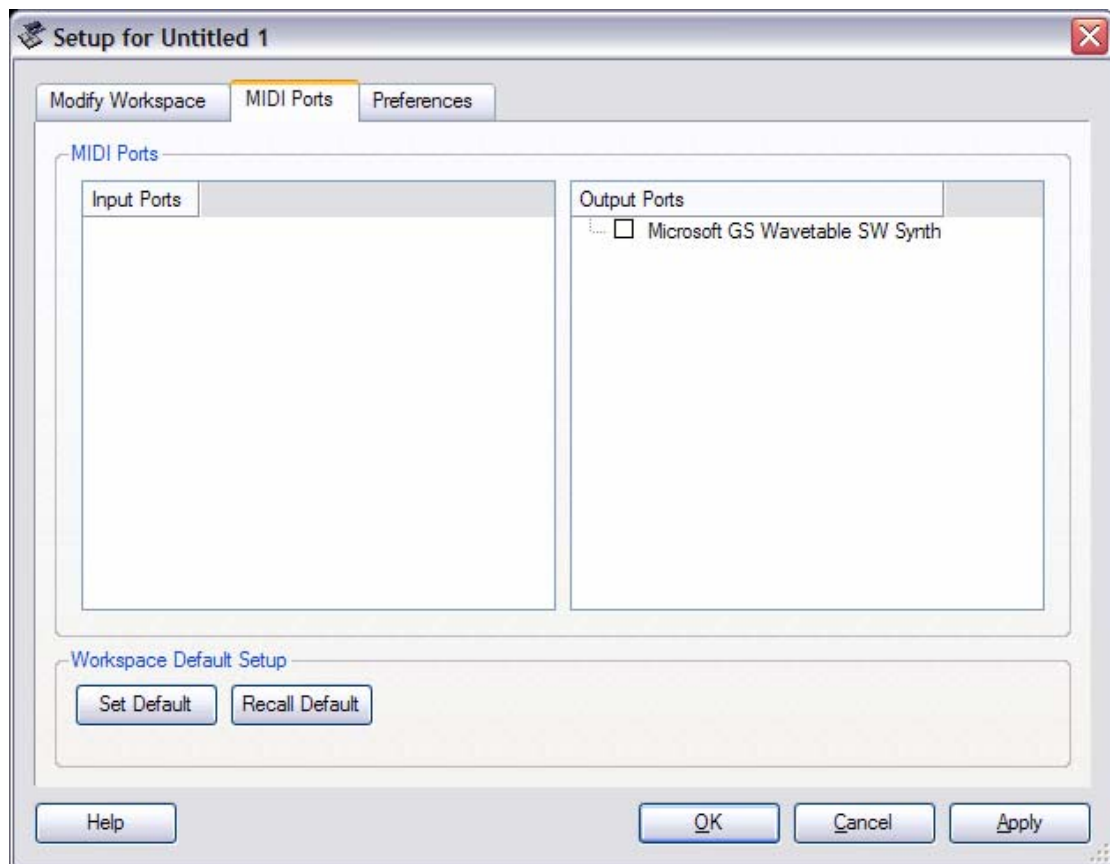
Open Studio Manager *Start -> Programs -> YAMAHA Studio Manager -> Studio Manager* (or from within Cubase SX3 select *Devices -> Studio Connections*).



Select Alesis DM Pro and Click Add ->



Click MIDI Ports



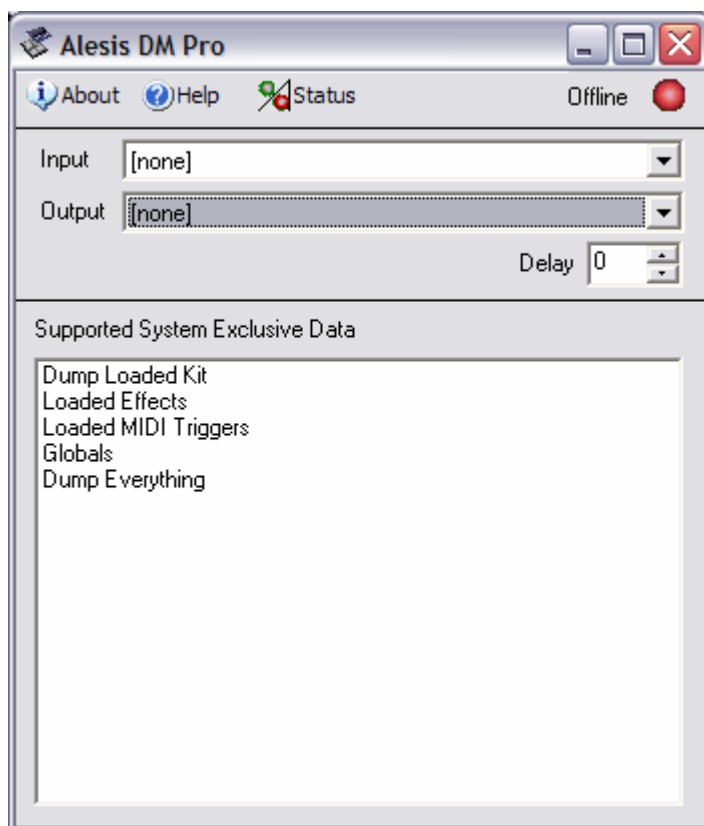
(For the Studio Manager Standalone application only) Select the MIDI Ports that connect to the DM Pro's MIDI IN and MIDI OUT ports, and the MIDI Ports required.

The MIDI Ports selected here are the only MIDI Ports that will be available from within Studio Manager when each Studio Connections Modules are set.

Select OK



Double Click the Alesis DM Pro Icon (Picture)



Select the Input and Output MIDI Ports that correspond to the Alesis DM Pro. The delay parameter is useful if you ever have any problems with corrupted

loads into the DM Pro. Increasing the Delay parameter will slow down the MIDI stream when it reloads.

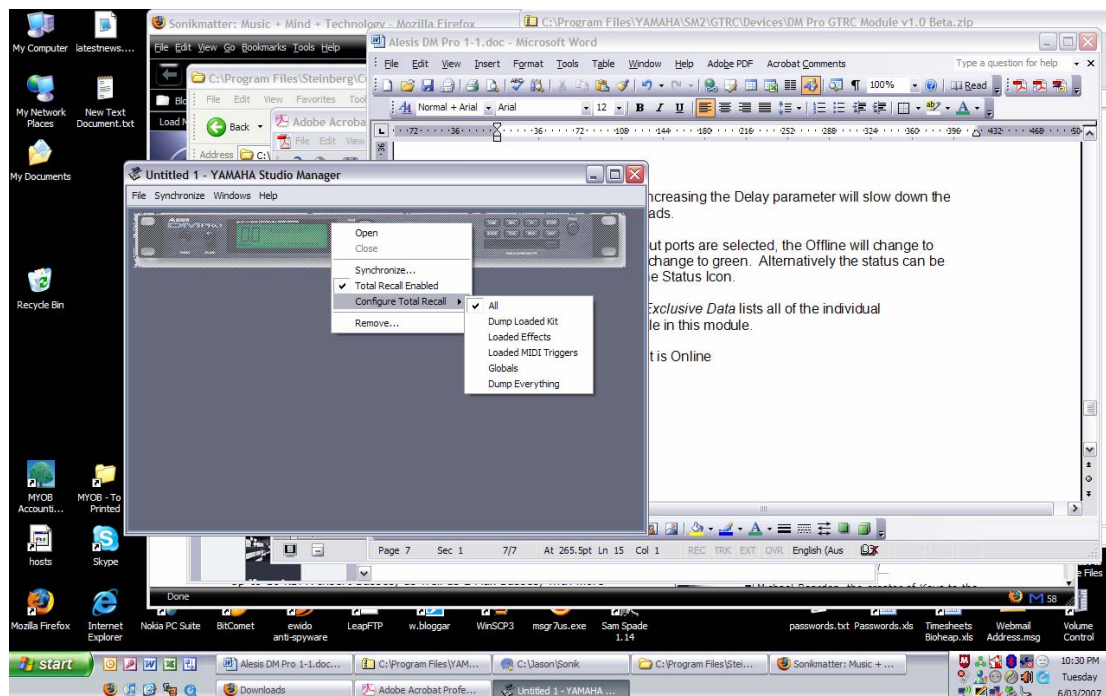
Once the Input and Output ports are selected, the Offline will change to Online, and the light will change to green. Alternatively the status can be updated by clicking on the Status Icon.

The *Supported System Exclusive Data* lists all of the individual synchronizations available in this module.

Close this window once it is Online

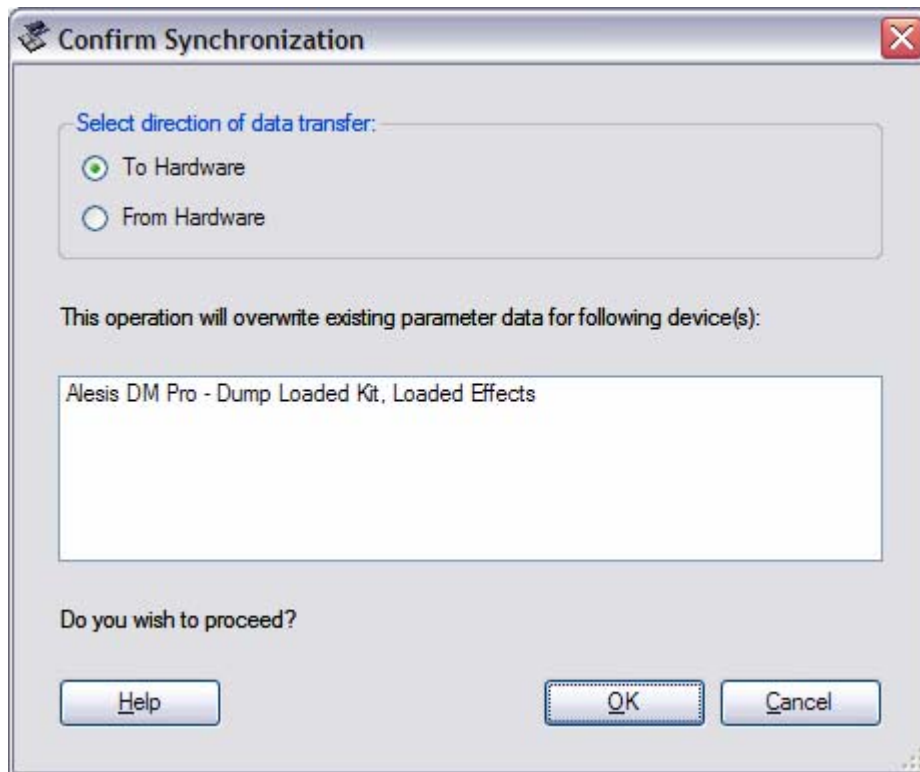
Using Studio Manager

Right click the DM Pro Icon and select *Configure Total Recall*.



Select the Synchronizations that you wish to use. Multiple dumps can be selected by repeating the procedure.

Right Click the DM Pro Icon and Select *Synchronize*.



Select *From Hardware* to receive the data from the DM Pro, and *To Hardware* to load data to the DM Pro. Press OK to start the Synchronization.

Use the File Menu to Save the Studio Manager Data, which can be reopened, in order to resynchronize the DM Pro.

If this is used from within Cubase SX3, then the data will be saved within the Cubase Project. Studio Manager can be set to reload the data automatically by selecting the option within the Preferences Tab during the Module Configuration, above.

Synchronizations

Dump Loaded Kit – This saves the DM Pro kit that is in the edit buffer, or the Drum Kit that has been loaded, and is currently active.

Loaded Effects – This saves the current effects configuration, that is loaded with the kit, or is within the edit buffer.

Loaded MIDI Triggers – This saves the current MIDI triggers. MIDI triggers are globally set on the DM Pro, and only one is available, for all Kits. Studio Connections allows you to have multiple sets of triggers available.

Globals – This stores all Global parameters; Basic MIDI Channel, Filter Program Receive, Filter Program Transmit, Controller A-D Assign, Aux Pedal Controller Assign, Aux Pedal MIDI Channel, Hat Pedal Controller Assign, Hat Pedal MIDI channel, Local On/Off, MIDI Start On/Off

Dump Everything – This will dump all kits, drums, globals, and triggers, including the edit buffers, and the saved kits and drums. This dump is quite large and will take some time. This synchronization is a complete snapshot of the DM Pro at any given time.

Final Comments

Please check back at http://sonikmatter.com/wiki/Studio_Connections for new versions. Any problems or comments are welcome at <http://community.sonikmatter.com/forums/index.php?showtopic=28253>

This GTRC module was authored by The Puppeteer and is proudly supported by <http://sonikmatter.com> and [Godlike Productions](#).

Alesis, DM Pro, Yamaha, Studio Connections, Studio Manager, Cubase and GTRC are products, names and/or trademarks. None of the company's that own or are associated with the terms in this document, Sonikmatter LLC or Godlike Productions warrant that this product is fit for purpose or error free. While all care has been taken by the author, this software is provided As-Is and no responsibility whatsoever will be accepted for loss or damage of any kind.

This module may not be retransmitted, copied, sold, given away or otherwise transferred without the express written permission of the author. It is provided for free, so if anyone wants a copy, please provide them with the links above, where they can download it themselves.

Revision History

6th March 2007

V 1.1 – added PDF Help File

7th February 2007

V1.0 Beta – Original version. Supports synchronizations of Loaded Kit, Loaded Effects, Loaded MIDI Triggers, Globals and Everything. Issued for testing.