



Kurzweil K2600

Generic Total Recall Component (GTRC) V 1.1.0

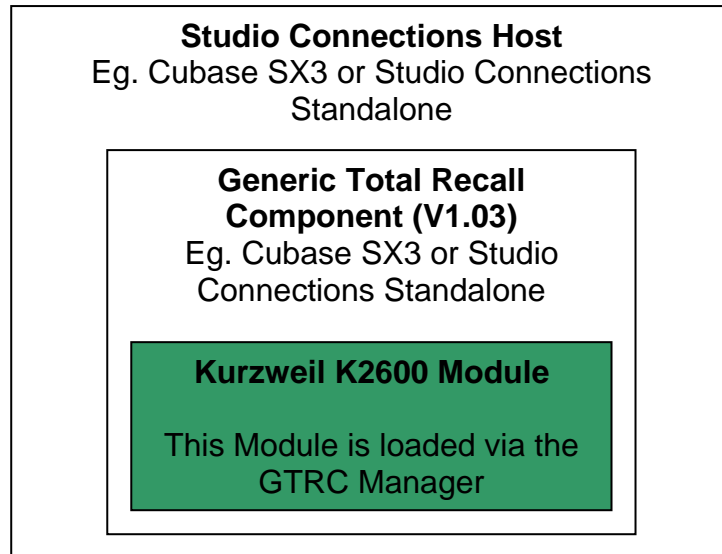
Kurzweil K2600 Help File



Introduction

This module is for use with GTRC V 1.03 or later. The latest version of GTRC is available from <http://www.studioconnections.org>.

GTRC is designed as a component for Studio Connections, and this Kurzweil K2600 module loads into Studio Connections via the GTRC Component, as per the diagram below.



Installation

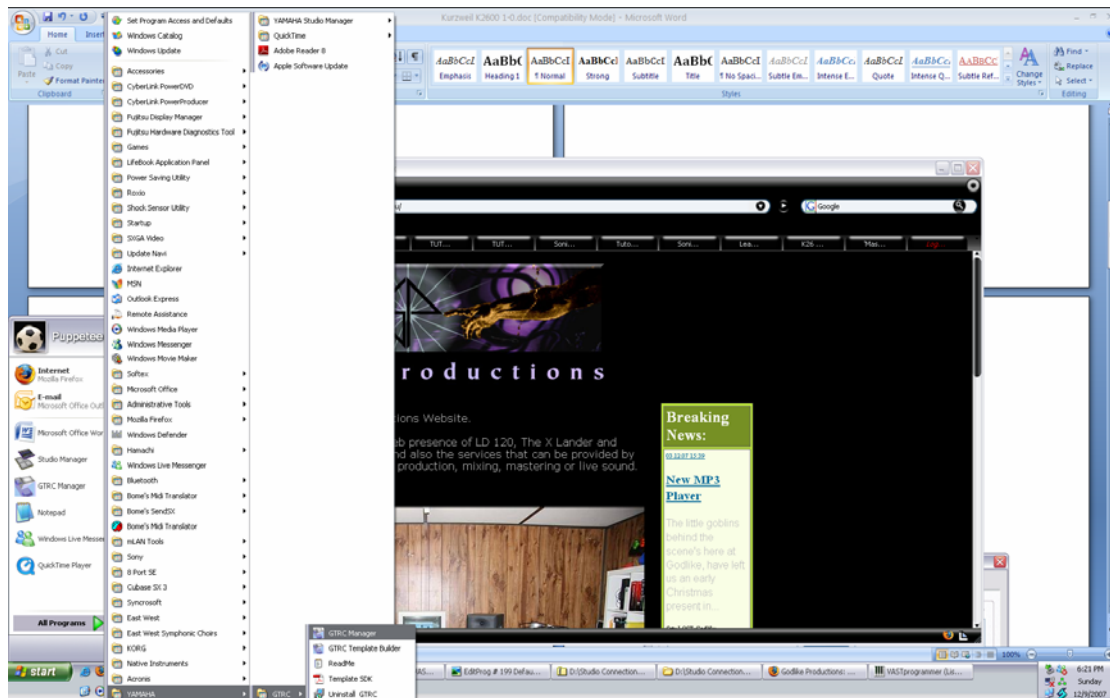
Unzip the complete contents of the *K2600_GTRC_1-0.zip* into the GTRC Devices Folder. The default location for this is C:\Program Files\YAMAHA\SM2\GTRC\Devices.

The following files should be installed

- *K2600 1.0.gtrc* – The K2600 GTRC Module
- *K2600_active.png* – The icon that shows in Studio Manager when the DM Pro is active
- *K2600_inactive.png* – The icon that shows in Studio Manager when the DM Pro is not active
- *K2600 1-0.pdf* – This help file.

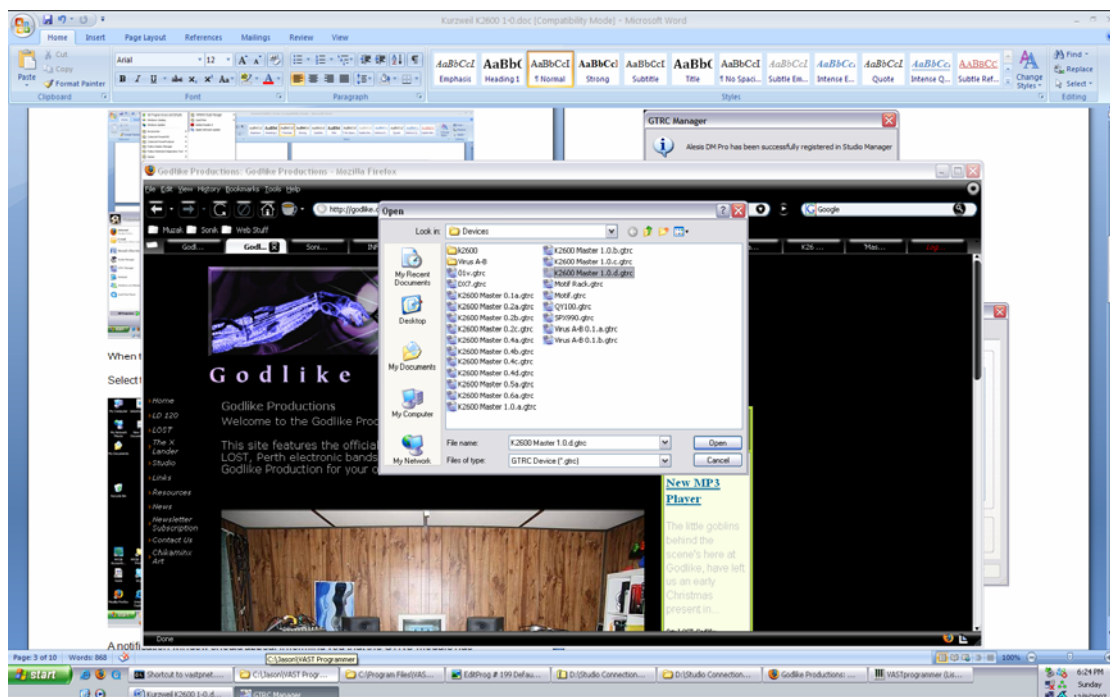
Loading the GTRC Module

Press Start -> Programs -> Yamaha -> GTRC -> GTRC Manager

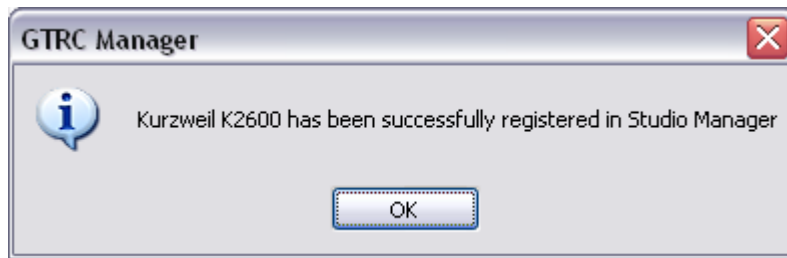


When the GTRC Manager window opens click “Add”

Select the *DMPPro V 1.1.gtrc* file, and click “Open”



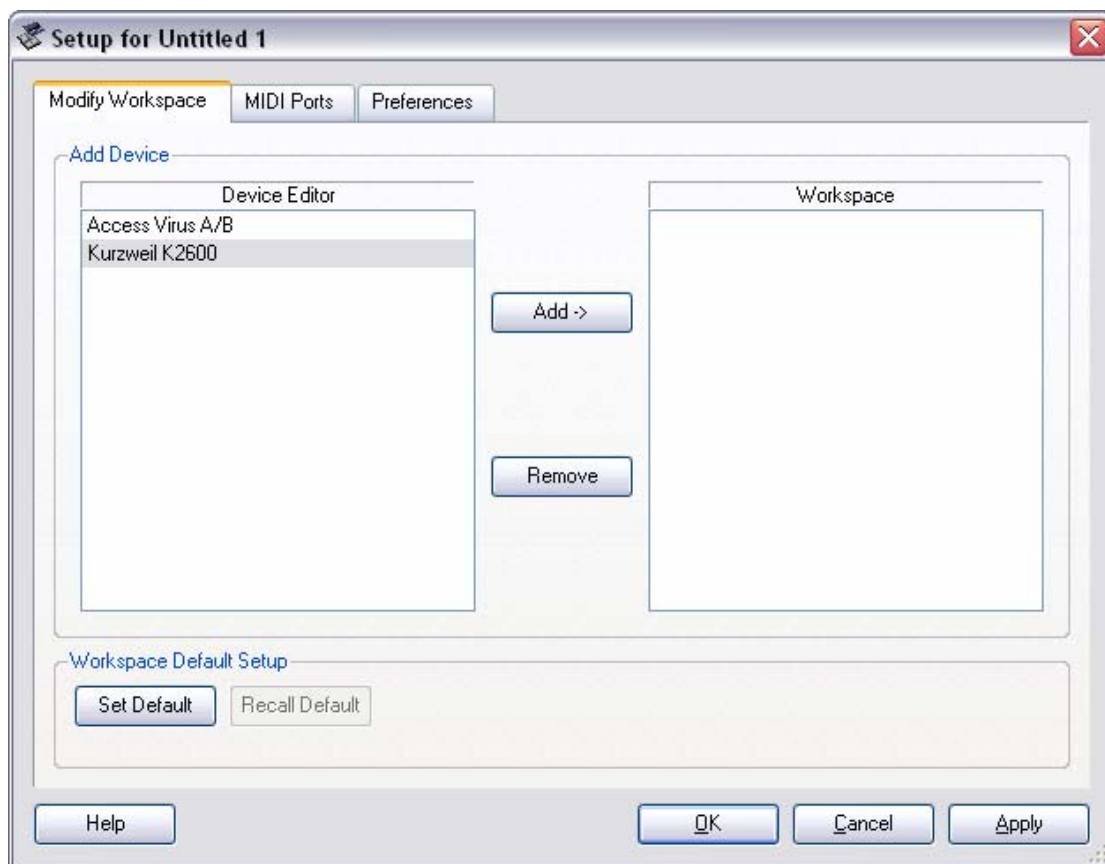
A notification window should appear informing you that the GTRC module has been successfully loaded.



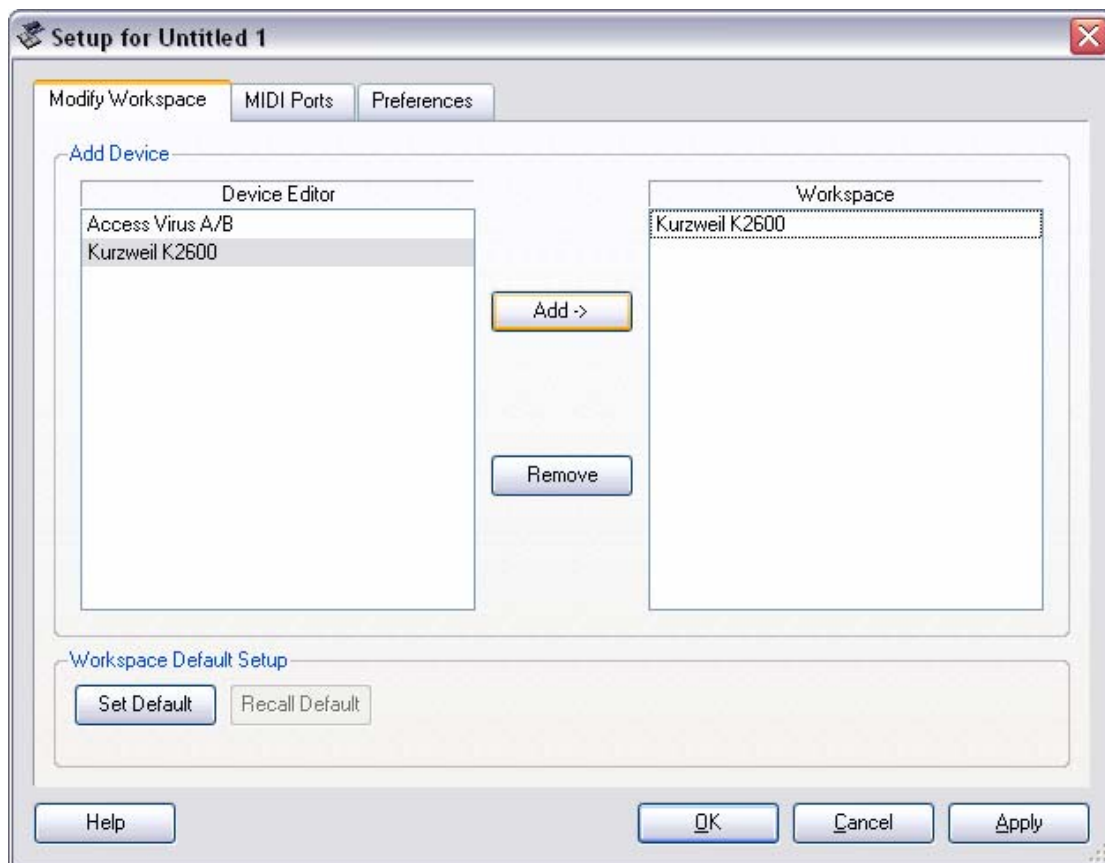
Close the GTRC Manager, or load other modules.

Configuring Studio Connections

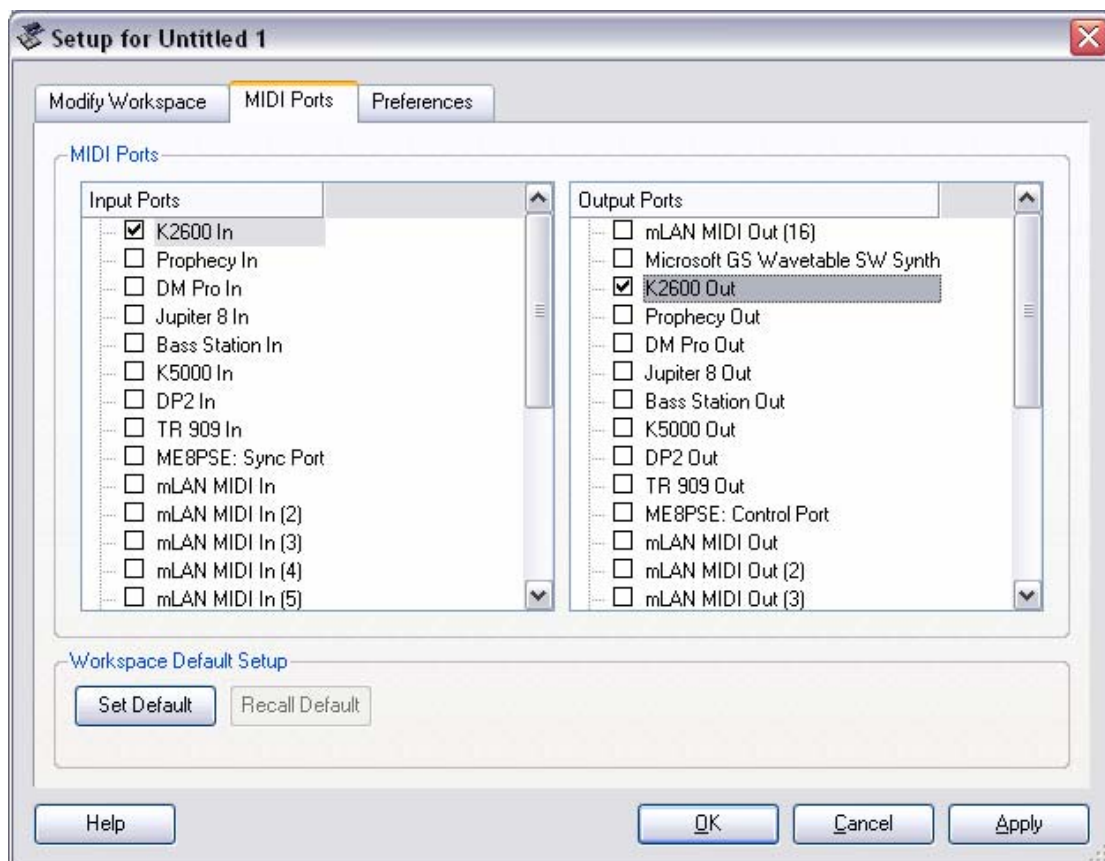
Open Studio Manager *Start -> Programs -> YAMAHA Studio Manager -> Studio Manager* (or from within Cubase SX3 select *Devices -> Studio Connections*).



Select Kurzweil K2600 and Click Add ->



Click MIDI Ports

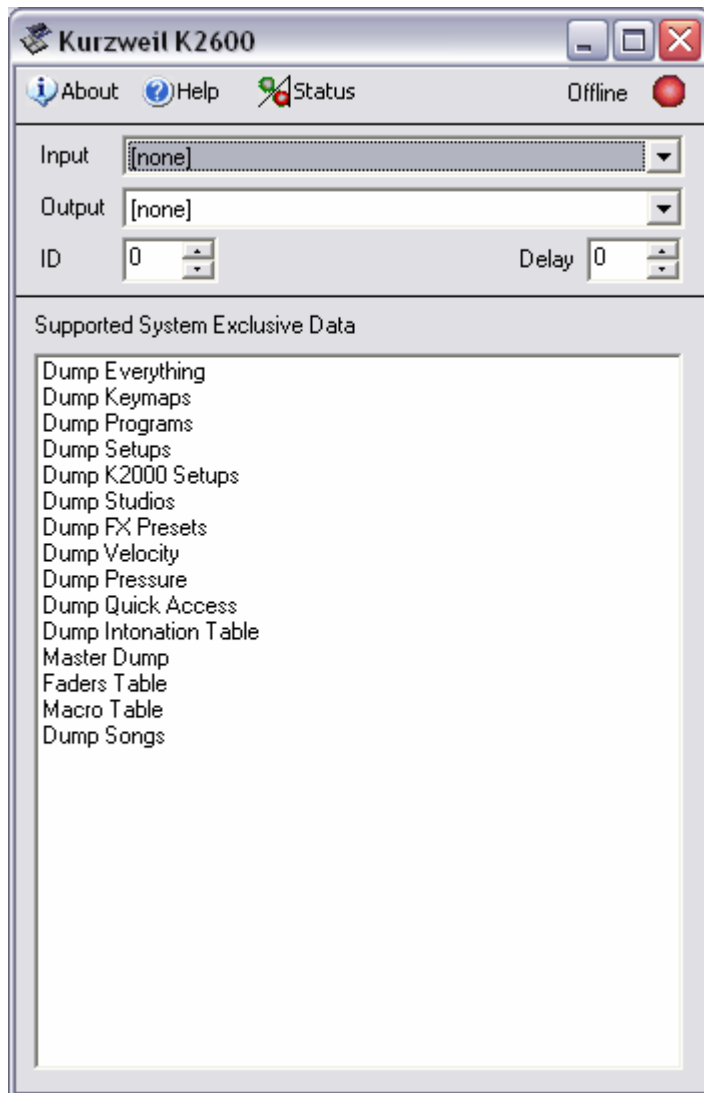


(For the Studio Manager Standalone application only) Select the MIDI Ports that connect to the K2600's MIDI IN and MIDI OUT ports, and the MIDI Ports required.

Select OK



Double Click the Kurzweil K2600 Icon (Picture)



Select the Input and Output MIDI Ports that correspond to the Kurzweil K2600. The delay parameter is useful if you ever have any problems with corrupted loads into the DM Pro. Increasing the Delay parameter will slow down the MIDI stream when it reloads. Set the ID to the same ID as the K2600 that you wish to control. You can set the SYSEX ID on the MIDI Receive Page.

```

MIDIMode:RECEIVE
BasicChannel:1          SysEx ID   :0
MIDI Mode    :Multi     SCSI ID    :6
AllNotesOff  :Normal    BendSmooth:On
ProgChgType  :Extended  LocalKbdCh:None
VelocityMap  :1 Linear  BankSelect:Ctl 32
PressureMap  :1 Linear  PowerMode  :User
  
```

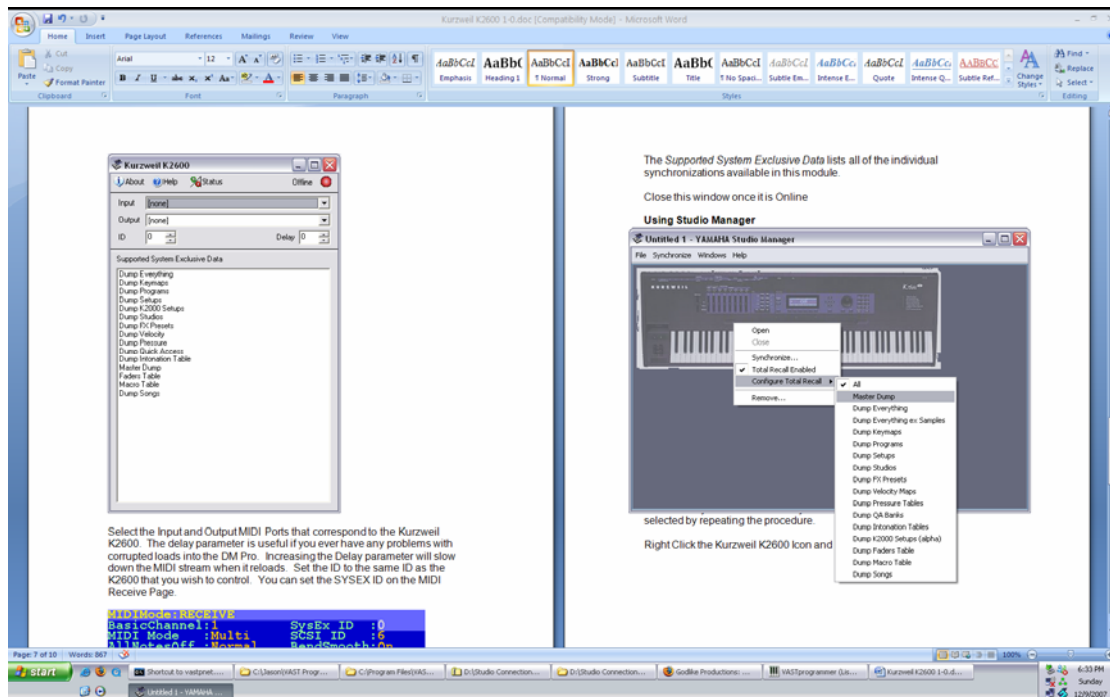
Once the Input and Output ports are selected, the Offline will change to Online, and the light will change to green. Alternatively the status can be updated by clicking on the Status Icon.

The *Supported System Exclusive Data* lists all of the individual synchronizations available in this module.

Close this window once it is Online

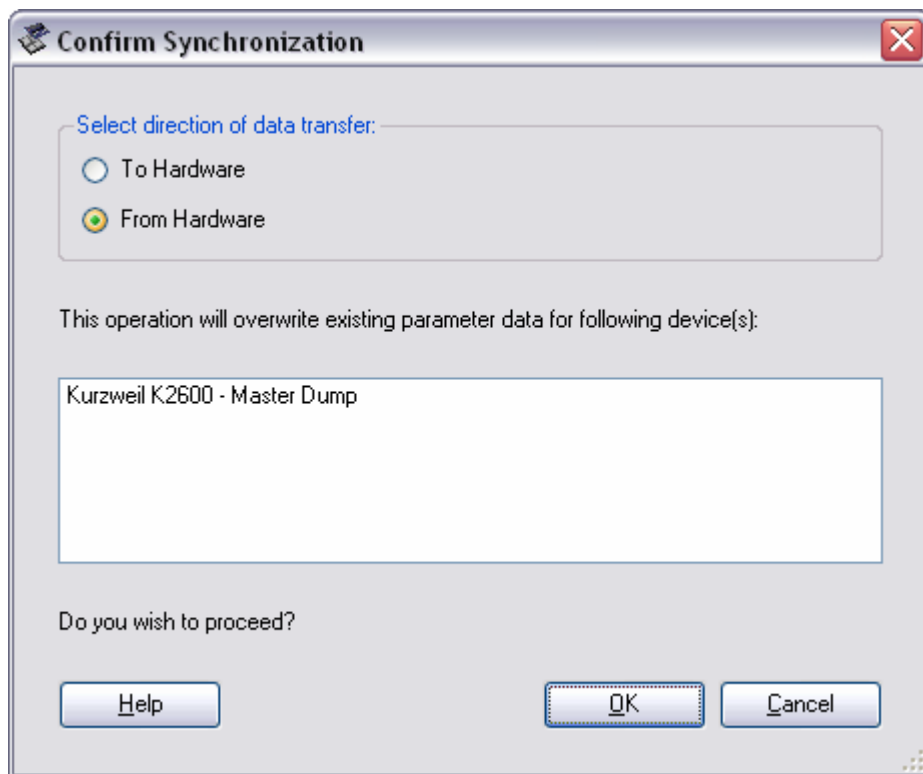
Using Studio Manager

Right click the K2600 Icon and select *Configure Total Recall*.



Select the Synchronizations that you wish to use. Multiple dumps can be selected by repeating the procedure.

Right Click the Kurzweil K2600 Icon and Select *Synchronize*.



Select *From Hardware* to receive the data from the K2600, and *To Hardware* to load data to the K2600. Press OK to start the Synchronization.

Use the File Menu to Save the Studio Manager Data, which can be reopened, in order to resynchronize the DM Pro.

If this is used from within Cubase SX3, then the data will be saved within the Cubase Project. Studio Manager can be set to reload the data automatically by selecting the option within the Preferences Tab during the Module Configuration, above.

Synchronizations

All – This is the default setting and will perform ALL of the following dumps. It is recommended that you don't use ALL as your selection, as there are many repetitions, and some model specific dumps may cause problems. It is recommended that you use Master Dump, Dump Everything, or Dump Everything except Samples, if you want a complete snapshot of your machine, or select the specific dumps manually (more than one can be selected).

Master Dump – This dumps the master table. This contains the programs assigned to each MIDI channel, the global MIDI settings, the Master Page settings, the Control Setup assignment. It's essentially a snapshot of the machine at any one point in time, but doesn't contain the actual sound files.

Dump Everything – This saves everything in the K2600 RAM. This includes all songs, programs, setups, intonation tables, master tables, velocity tables,

pressure maps, setups, keymaps and samples. Note that this will take a very long time if you have a lot of samples loaded.

Dump Everything except Samples – As above, but it does not dump the samples. This is much faster than the Dump Everything dump, but you will need to save your samples manually to disk if you have any loaded. Note that Pressure and Intonation tables dump support has been confirmed as working, and that this dump does not support K2000 setups. You'll need to select the individual dumps manually to get this support on the K2000. For this preset, it will perform all of the dumps listed below it (except the K2000 setups), in order. Manually selecting the dumps from Studio Manager is equivalent to selecting this item by itself. There is no need to do both this dump, and a manual selection of the following dumps, unless you want the ability to restore individual object classes (for example restore programs only.)

Dump Keymaps – This dumps all keymaps from all banks, except factory keymaps loaded into FlashROM

Dump Programs – This will dump all programs from all banks, except the factory programs that are loaded into FlashROM

Dump Setups – This will dump all setups from all banks, except the factory setups that are loaded into FlashROM. This does not support K2000 setups. You'll need to use the K2000 setups dump for K2000 support.

Dump Studio – This dumps all of the user KDFX studio's.

Dump FX Presets – This dumps all of the user KDFX Effect Presets (ie the blocks that make up effects chain's in the studio).

Dump Velocity Maps – This dumps all user velocity maps. These dumps will be empty if you have no customised velocity maps. This may produce an error in studio connections, but will not result in data loss, nor will it cause a problem. Studio Connections is simply waiting for something and it doesn't arrive. If you receive the error message and it annoys you, simply create a user velocity map as a workaround.

Dump Pressure Tables – This dumps all user pressure maps. These dumps will be empty if you have no customised pressure maps. This may produce an error in studio connections, but will not result in data loss, nor will it cause a problem. Studio Connections is simply waiting for something and it doesn't arrive. If you receive the error message and it annoys you, simply create a user pressure map as a workaround.

Dump QA Banks – This will dump all user Quick Access Banks.

Dump Intonation Tables - This dumps all user intonation tables. These dumps will be empty if you have no customised intonation tables. This may produce an error in studio connections, but will not result in data loss, nor will it cause a problem. Studio Connections is simply waiting for something and it doesn't

arrive. If you receive the error message and it annoys you, simply create a user intonation table as a workaround.

Dump K2000 Setup (alpha) – This will dump K2000 style setups. Do not use with K2500's or K2600's. It probably won't do anything, but it may mess things up. This feature has not yet been tested, but there have been no user reports of problems. If you have problems or successes, please contact us at <http://godlike.com.au> so that we can update the state of this feature, or fix the problem.

Dump Faders Table – This dumps the user fader table. This is the assignment of faders that you see when you press the MIDI Faders button. There is no other way to save multiple sets of MIDI faders without using SYSEX.

Dump Macro Table – This dumps the current macro table loaded into the Kurzweil's memory. This is what you see when you press Disk->Macro.

Dump Songs – This dumps the current user songs.

Dump K2000 Effects – This will dump all K2000 user effects. This can also be used with the K2500, but is not supported with the K2600. This is currently an untested dump. Please provide any successes or problems with this dump at <http://godlike.com.au>

Final Comments

Please check back at <http://godlike.com.au/index.php?id=gtrc> for new versions. Any problems or comments are welcome by clicking Contact Us at <http://godlike.com.au>

This GTRC module was authored by The Puppeteer and is proudly supported by [Godlike Productions](http://godlike.com.au).

Kurzweil, K2600, K2000, K2500, K2661, KDFX, VAST, Yamaha, Studio Connections, Studio Manager, Cubase and GTRC are products, names and/or trademarks owned by the relevant companies. None of the company's that own or are associated with the terms in this document or Godlike Productions warrant that this product is fit for purpose or error free. While all care has been taken by the author, this software is provided As-Is and no responsibility whatsoever will be accepted for loss or damage of any kind, including, but not limited to data loss.

This module may not be retransmitted, copied, sold, given away or otherwise transferred without the express written permission of the author. It is provided for free, so if anyone wants a copy, please provide them with the links above, where they can download it themselves.

Revision History

9th December 2007

V 1.1.0

- Added PDF Help File
- Added support for K2000 Effects (in alpha state)
- Moved Dump Macro Table to Stable State
- Moved Pressure Tables to Stable State
- Moved Intonation Tables to Stable State

8th October 2007

V 1.0.d

- Dump All now only dumps user objects
- Requires GTRC 1.03
- Improved Master Dump functionality (for machine snapshot)
- Dump Everything except samples added
- Dump all Keymaps added
- Dump all Programs added
- Dump all Setups added
- Dump all Studio's added
- Dump all FX Presets added
- Dump velocity tables added
- Dump Pressure Tables alpha added
- Dump QA Banks
- Dump Intonation Tables alpha added
- Support for K2000 setups added (untested)
- Dump Faders Table added
- Dump Macro Table added (alpha)
- Dump Songs added

8th February 2007

V 0.6.a

- Improved Dump All functionality (RAM and ROM)
- Requires GTRC 1.02

Known bugs – will not write to first 50-100 programs with Dump All.

7th February 2007

V 0.4.c

- Added Dump All functionality. Will support dumps up to about 2MB

Known bugs – sample dumping via dump everything is unstable.

10th November 2005

V 0.2.c

- First Public Beta.
- Supports Master Table Dump