



## Kurzweil PC3

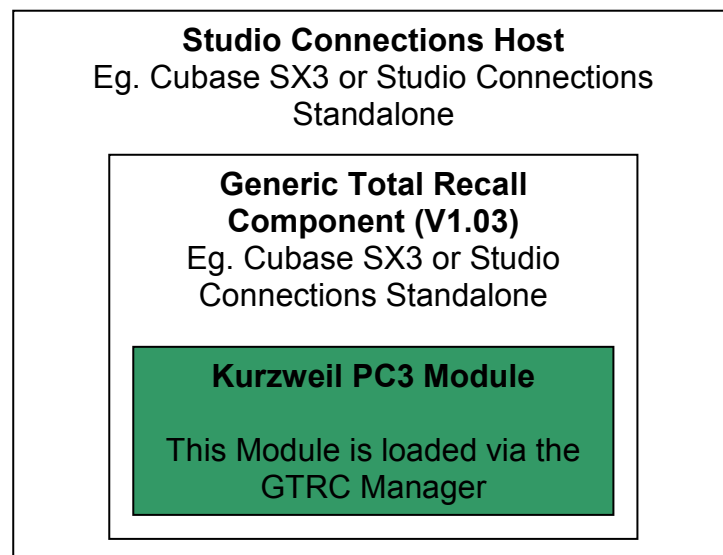
Generic Total Recall Component (GTRC) V 0.1.b

Kurzweil PC3 Help File

### Introduction

This module is for use with GTRC V 1.02 or later, though we recommend using the latest version (V1.03 at the time of writing). The latest version of GTRC is available from <http://www.studioconnections.org>.

GTRC is designed as a component for Studio Connections, and this Kurzweil PC3 module loads into Studio Connections via the GTRC Component, as per the diagram below.



### Installation

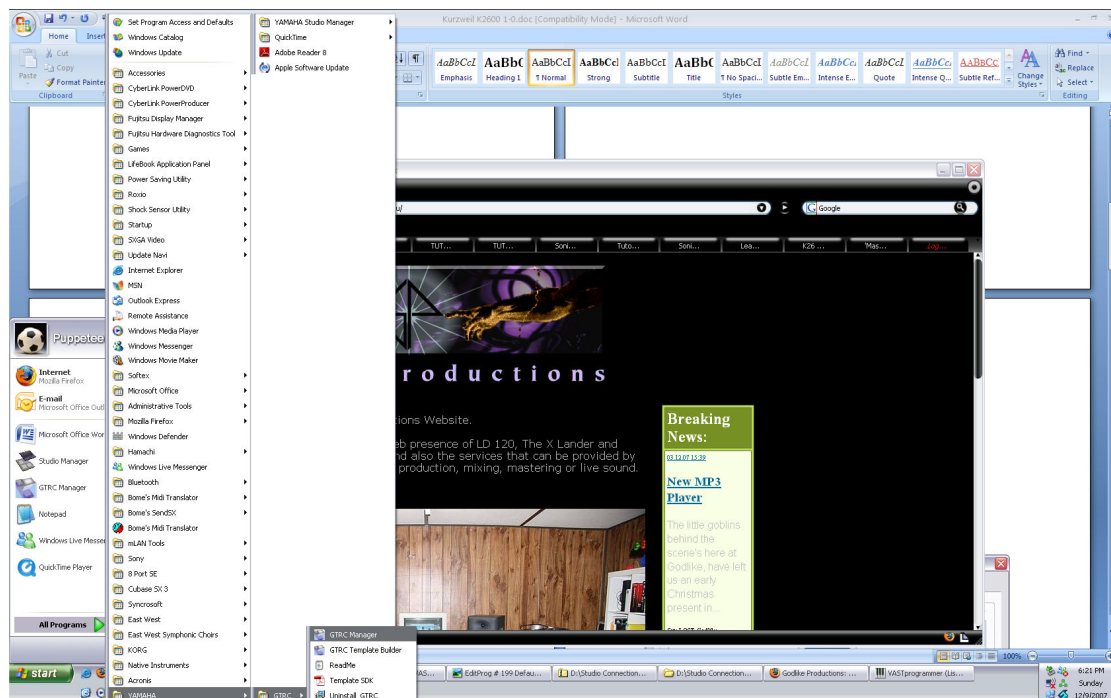
Unzip the complete contents of the *PC3\_GTRC\_0-1-b.zip* into the GTRC Devices Folder. The default location for this is C:\Program Files\YAMAHA\SM2\GTRC\Devices.

The following files should be installed

- *PC3 0.1.b.gtrc* – The PC3 GTRC Module
- *PC3On.png* – The icon that shows in Studio Manager when the PC3 is active
- *PC3Off.png* – The icon that shows in Studio Manager when the PC3 is not active
- *PC3 0-1-b Help.pdf* – This help file.

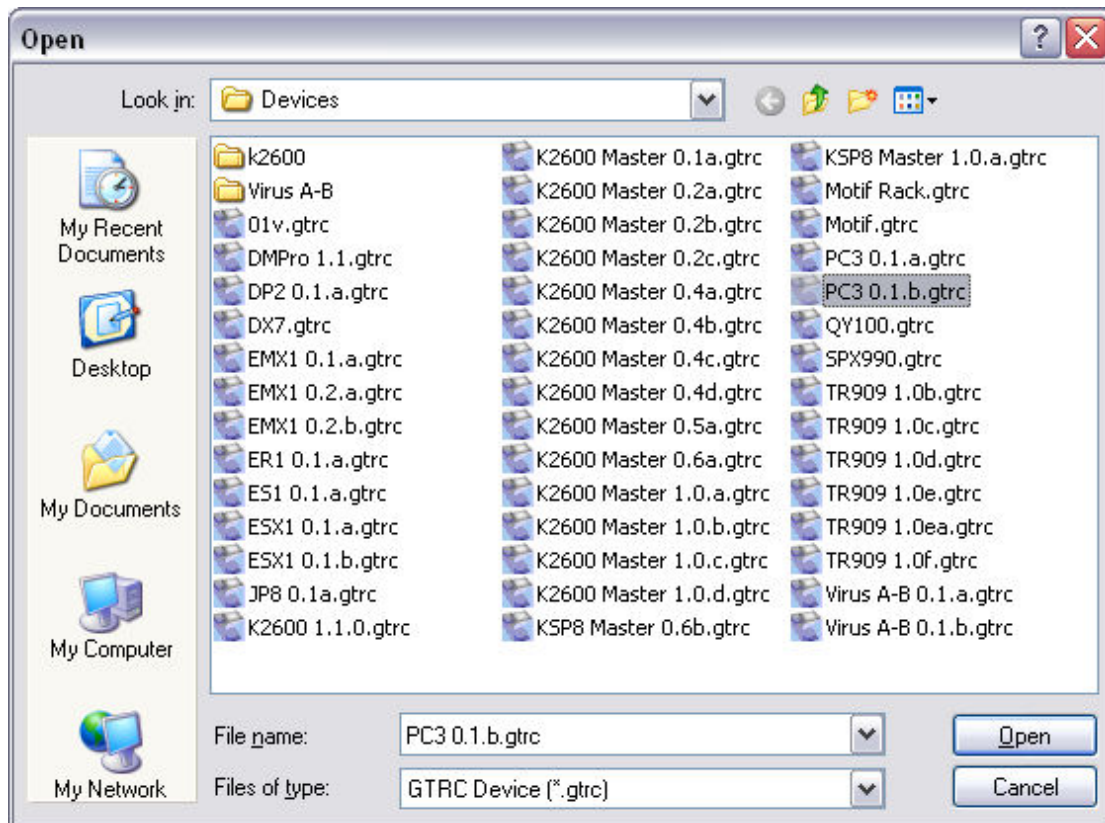
## Loading the GTRC Module

Press Start -> Programs -> Yamaha -> GTRC -> GTRC Manager

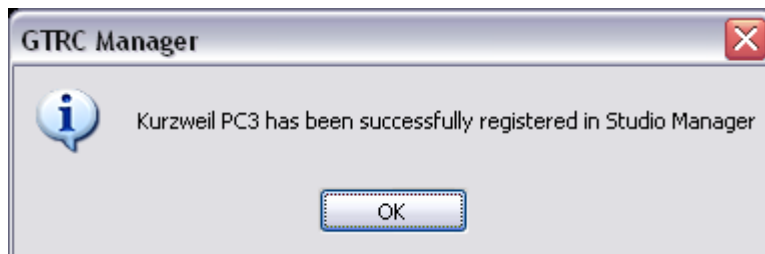


When the GTRC Manager window opens click “Add”

Select the *PC3 0.1.b.gtrc* file, and click “Open”



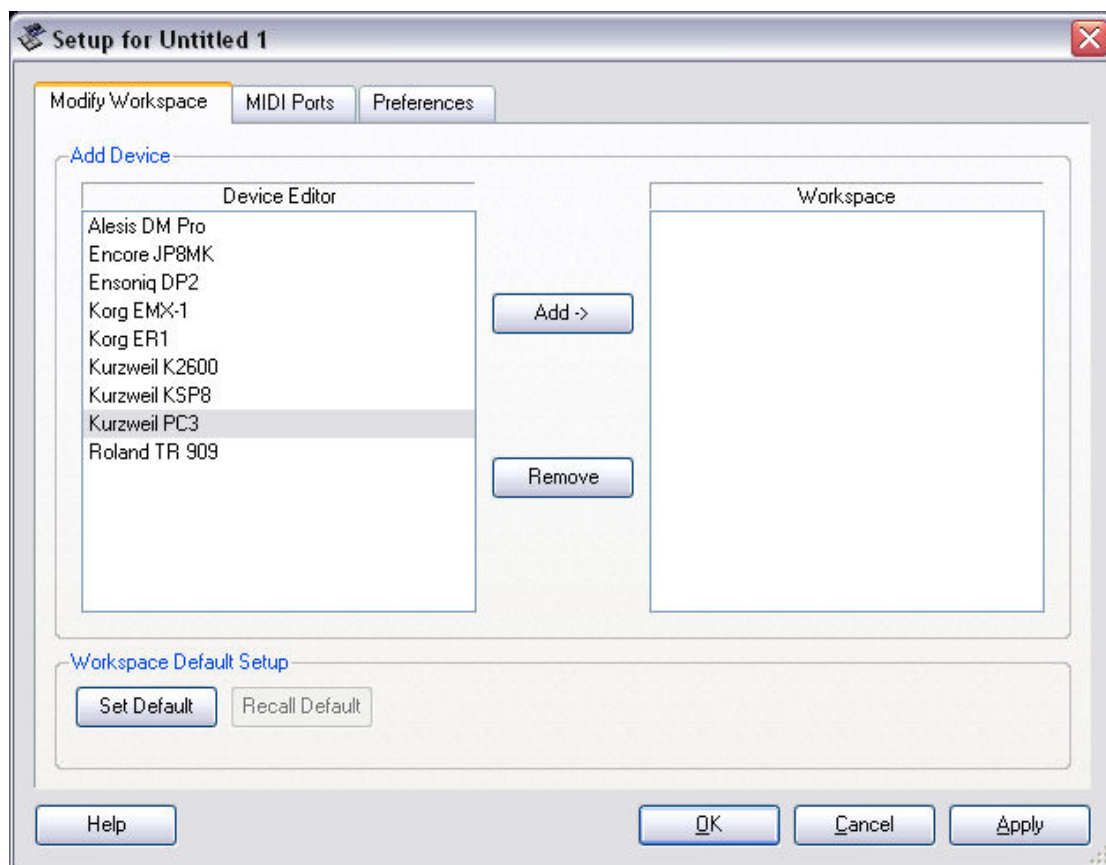
A notification window should appear informing you that the GTRC module has been successfully loaded.



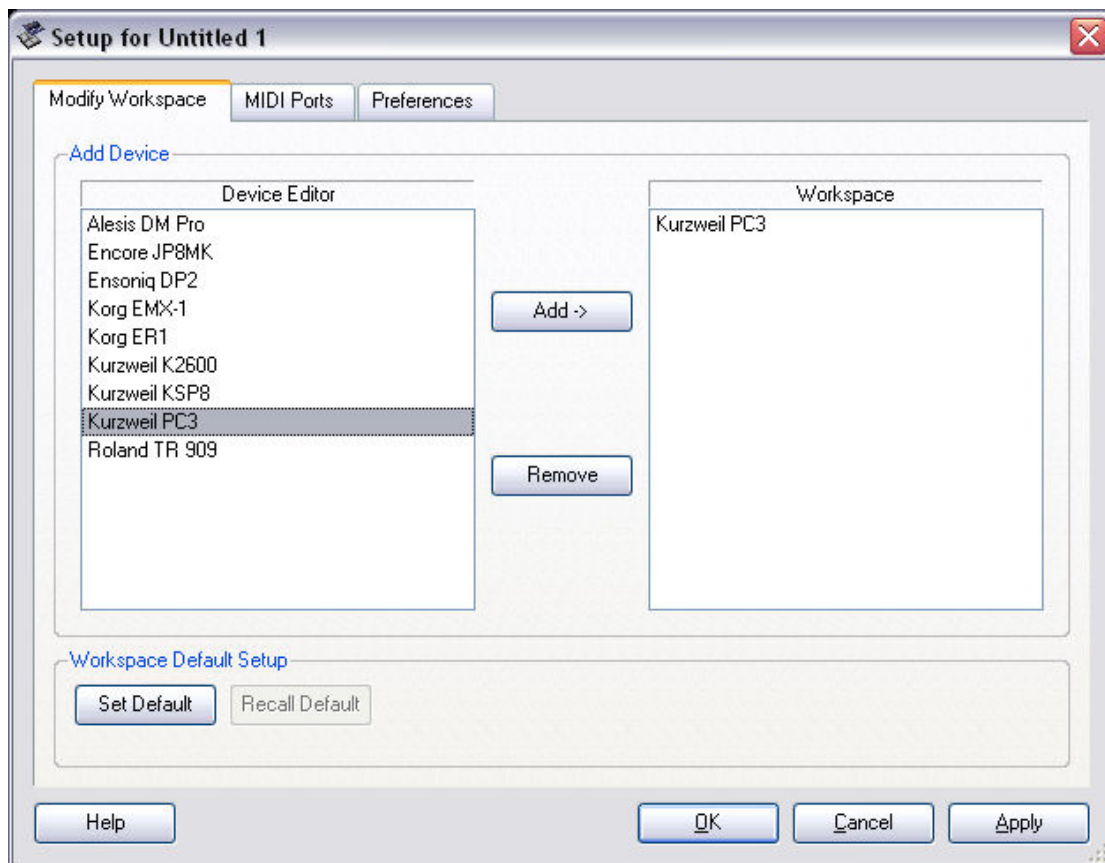
Close the GTRC Manager, or load other modules.

## Configuring Studio Connections

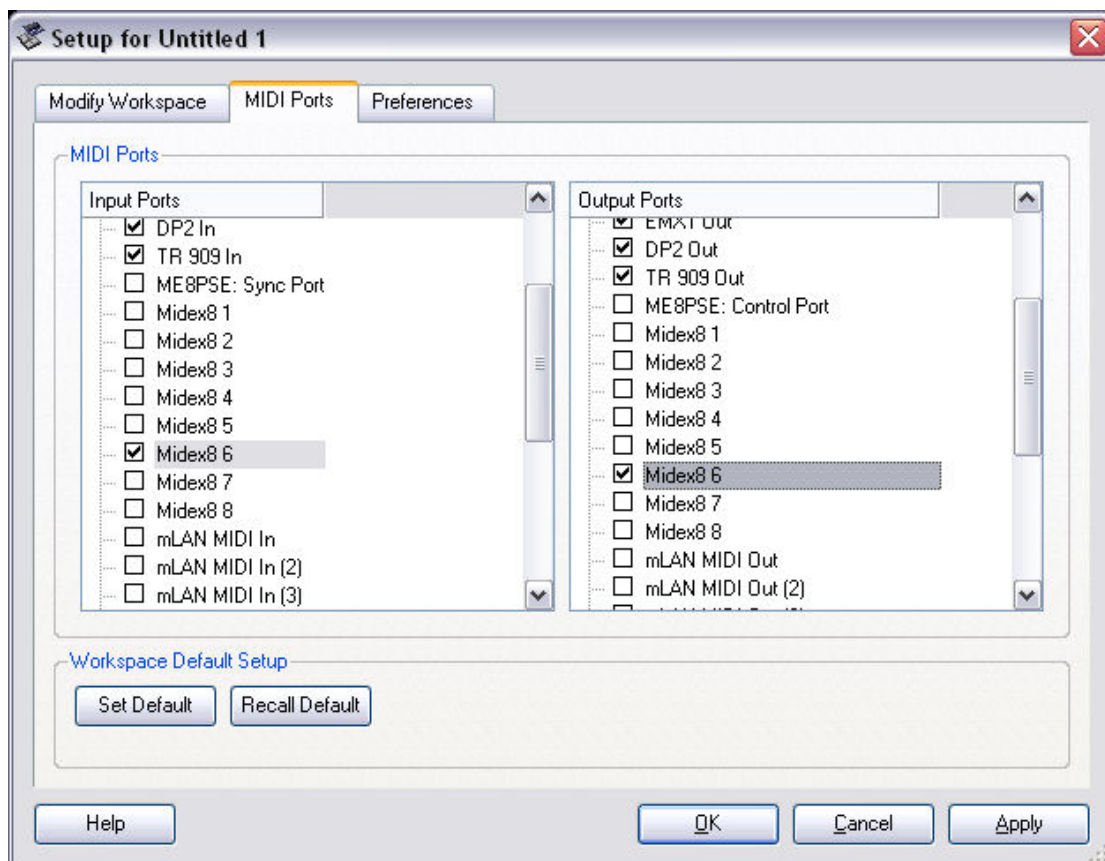
Open Studio Manager *Start -> Programs -> YAMAHA Studio Manager -> Studio Manager* (or from within Cubase SX3 select *Devices -> Studio Connections*).



Select Kurzweil PC3 and Click Add ->



Click MIDI Ports

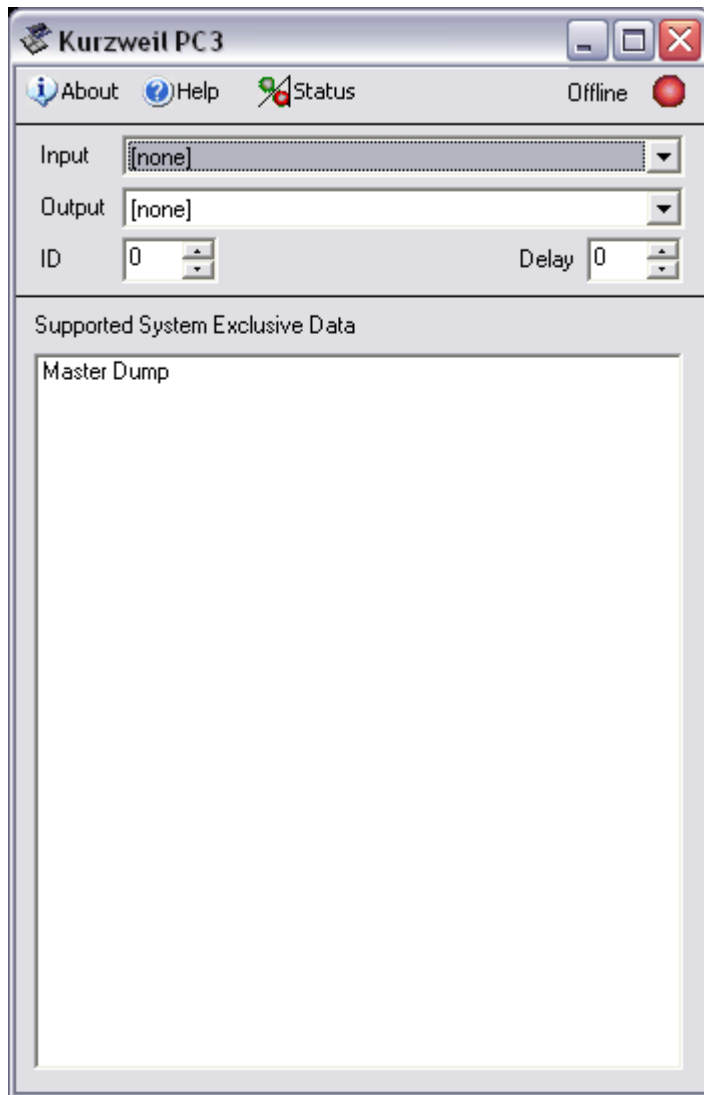


(For the Studio Manager Standalone application only) Select the MIDI Ports that connect to the PC3's MIDI IN and MIDI OUT ports, and the MIDI Ports required.

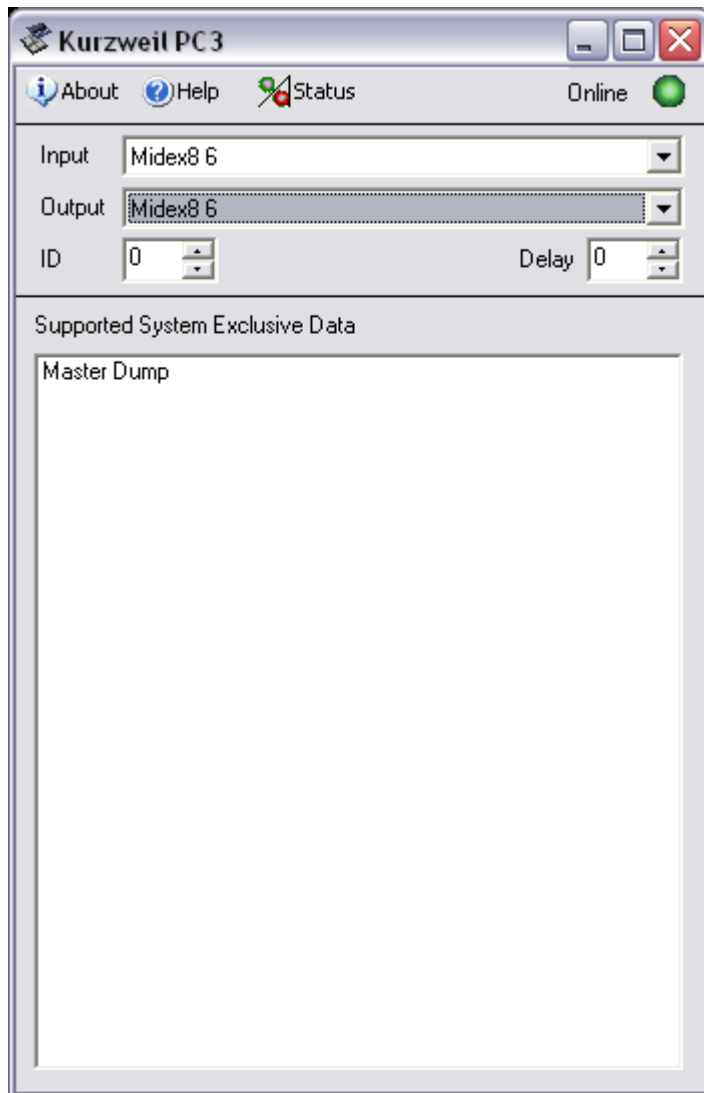
Select OK



Double Click the Kurzweil PC3 Icon (Picture)



Select the Input and Output MIDI Ports that correspond to the Kurzweil PC3. Once the Input and Output ports are selected, the Offline will change to Online, and the light will change to green. Alternatively the status can be updated by clicking on the Status Icon.



The delay parameter is useful if you ever have any problems with corrupted loads into the PC3. Increasing the Delay parameter will slow down the MIDI stream when it reloads. Set the ID to the same ID as the PC3 that you wish to control. You can set the SYSEX ID on the MIDI Receive Page.



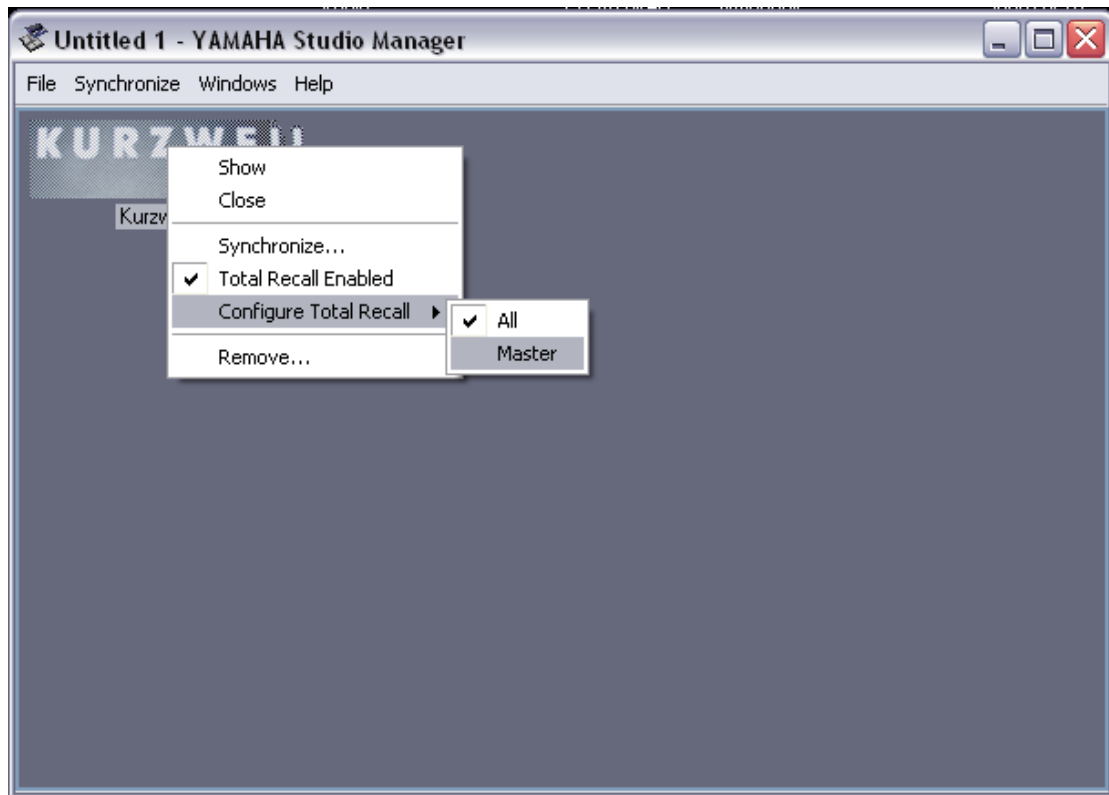
The *Supported System Exclusive Data* lists all of the individual synchronizations available in this module.

Close this window once it is Online



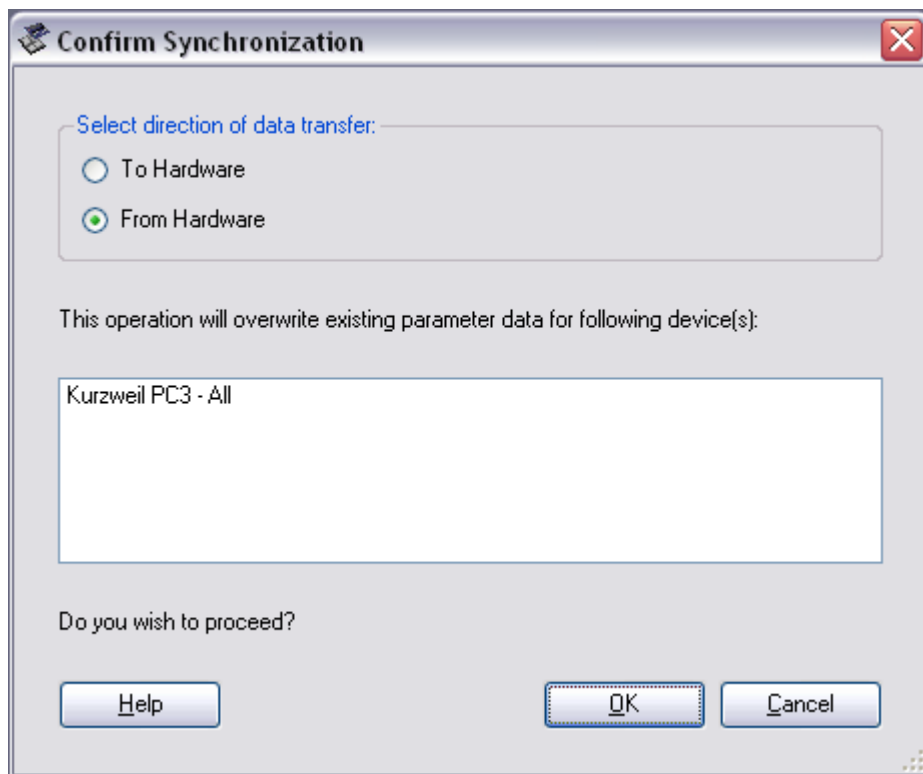
## Using Studio Manager

Right click the PC3 Icon and select *Configure Total Recall*.



Select the Synchronizations that you wish to use. Currently only the Master Dump is available. Once we receive a SYSEX Spec from Kurzweil we will attempt to support other objects.

Right Click the Kurzweil PC3 Icon and Select *Synchronize*.



Select *From Hardware* to receive the data from the PC3, and *To Hardware* to load data to the PC3. Press OK to start the Synchronization.

Use the File Menu to Save the Studio Manager Data, which can be reopened, in order to resynchronize the PC3.

If this is used from within Cubase SX3, then the data will be saved within the Cubase Project. Studio Manager can be set to reload the data automatically by selecting the option within the Preferences Tab during the Module Configuration, above.

## Synchronizations

All – This is the default setting and will perform ALL of the following dumps.

Master Dump – This dumps the master table. This contains the programs assigned to each MIDI channel, the global MIDI settings, the Master Page settings, the Control Setup assignment. It's essentially a snapshot of the machine at any one point in time, but doesn't contain the actual sound files.

## Final Comments

Please check back at <http://godlike.com.au/index.php?id=gtrc> for new versions. Any problems or comments are welcome by clicking Contact Us at <http://godlike.com.au>

This GTRC module was authored by The Puppeteer and is proudly supported by [Godlike Productions](#). Special Thanks to Rozzer for helping reverse engineer the PC3's SYSEX.

Kurzweil, PC3, K2600, K2000, K2500, K2661, KDFX, VAST, Yamaha, Studio Connections, Studio Manager, Cubase and GTRC are products, names and/or trademarks owned by the relevant companies. None of the company's that own or are associated with the terms in this document or Godlike Productions warrant that this product is fit for purpose or error free. While all care has been taken by the author, this software is provided As-Is and no responsibility whatsoever will be accepted for loss or damage of any kind, including, but not limited to data loss.

This module may not be retransmitted, copied, sold, given away or otherwise transferred without the express written permission of the author. It is provided for free, so if anyone wants a copy, please provide them with the links above, where they can download it themselves.

## **Revision History**

*8<sup>th</sup> February 2009*

V 0.1.a

- First Public Beta.
- Supports Master Table Dump

*17<sup>th</sup> May 2011*

V 0.1.b

- Updated module to support PC3 OS2 Master Tables