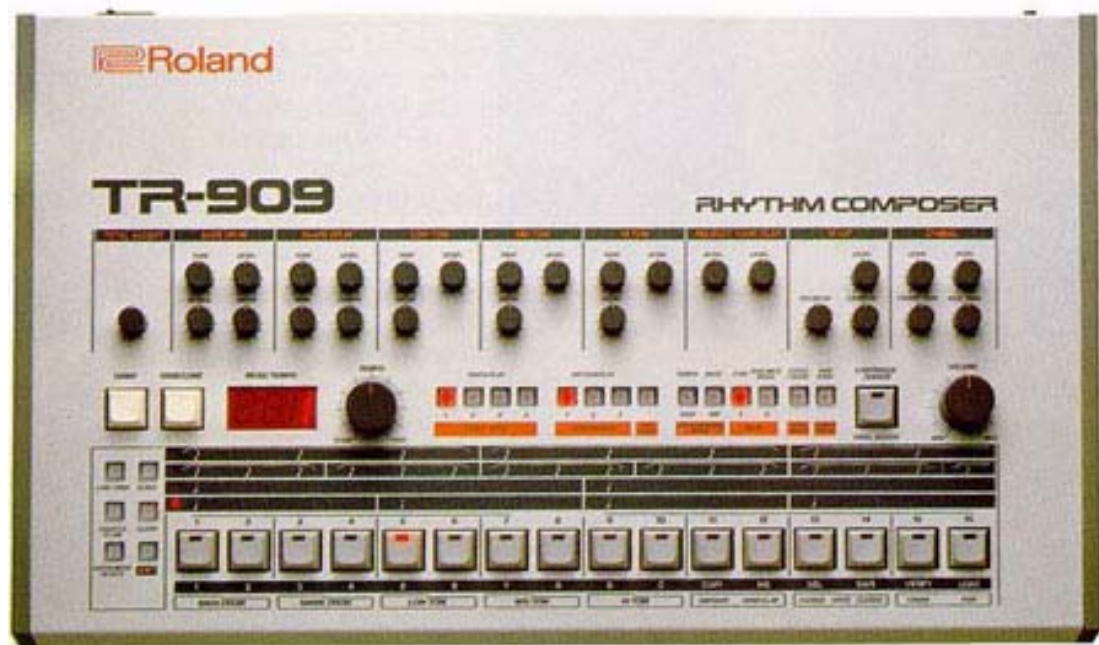




Roland TR 909

Generic Total Recall Component (GTRC)

Roland TR 909 Help File



Introduction

This module is for use with GTRC V 1.01 or later. The latest version of GTRC is available from <http://www.studioconnections.org>.

GTRC is designed as a component for Studio Connections, and this Roland TR 909 module loads into Studio Connections via the GTRC Component, as per the diagram below.

Studio Connections Host
Eg. Cubase SX3 or Studio Connections
Standalone

**Generic Total Recall
Component (V1.03)**
Eg. Cubase SX3 or Studio
Connections Standalone

Roland TR 909 Module

This Module is loaded via the
GTRC Manager

Installation

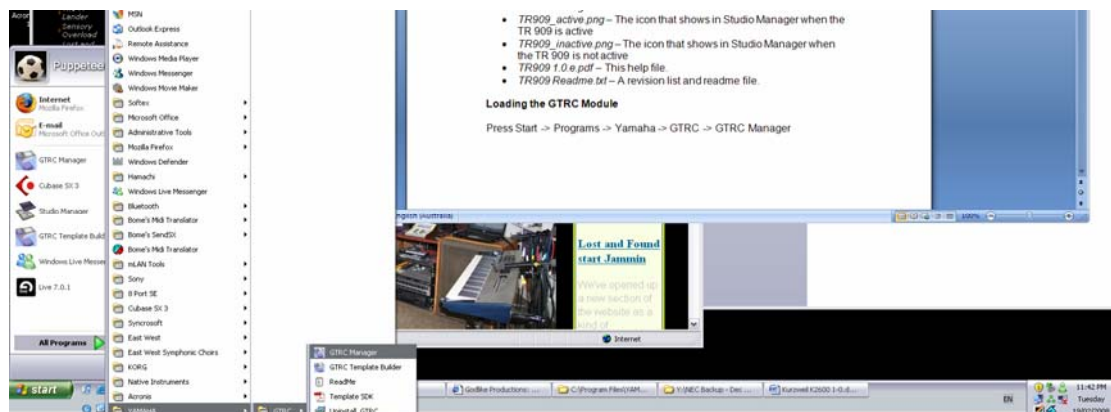
Unzip the complete contents of the *TR909 1.0.e.zip* into the GTRC Devices Folder. The default location for this is C:\Program Files\YAMAHA\SM2\GTRC\Devices.

The following files should be installed

- *TR909 1.0.e.gtrc* – The TR 909 GTRC Module
- *TR909_active.png* – The icon that shows in Studio Manager when the TR 909 is active
- *TR909_inactive.png* – The icon that shows in Studio Manager when the TR 909 is not active
- *TR909 1.0.e.pdf* – This help file.
- *TR909 Readme.txt* – A revision list and readme file.

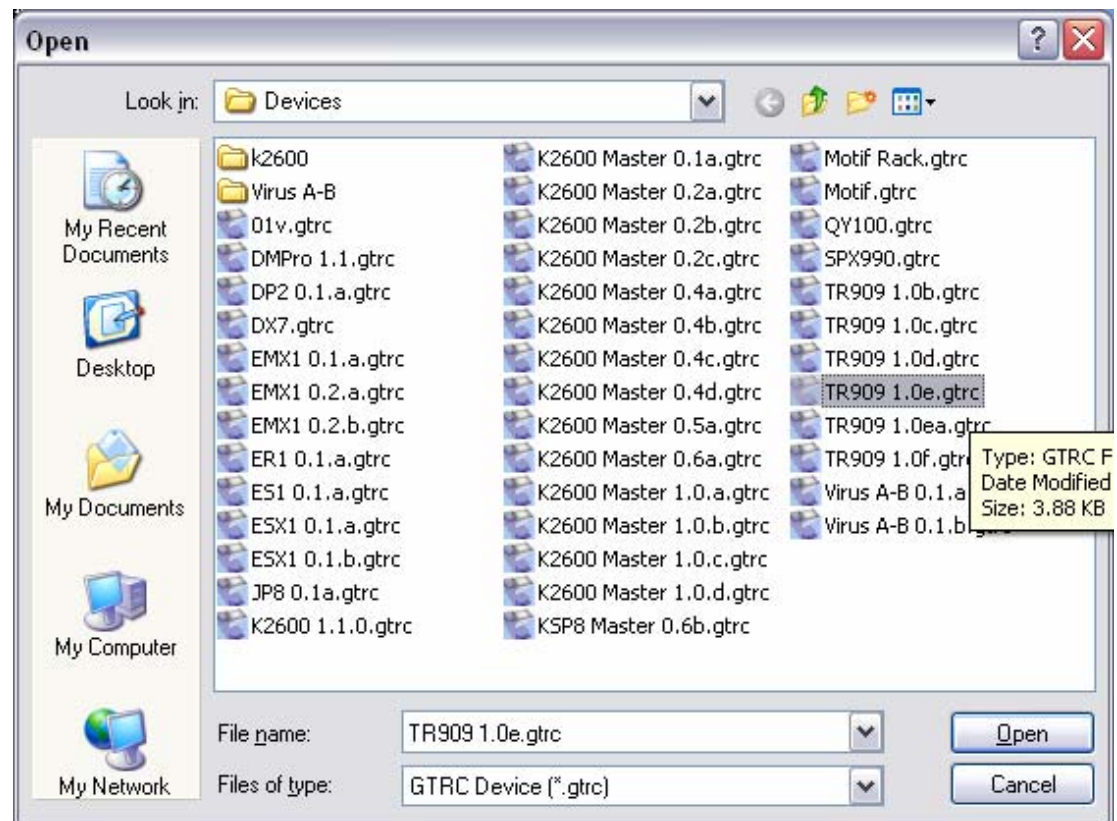
Loading the GTRC Module

Press Start -> Programs -> Yamaha -> GTRC -> GTRC Manager

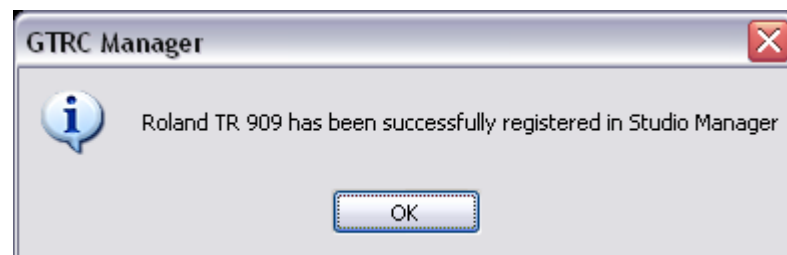


When the GTRC Manager window opens click “Add”

Select the *TR909 1.0e.gtrc* file, and click “Open”



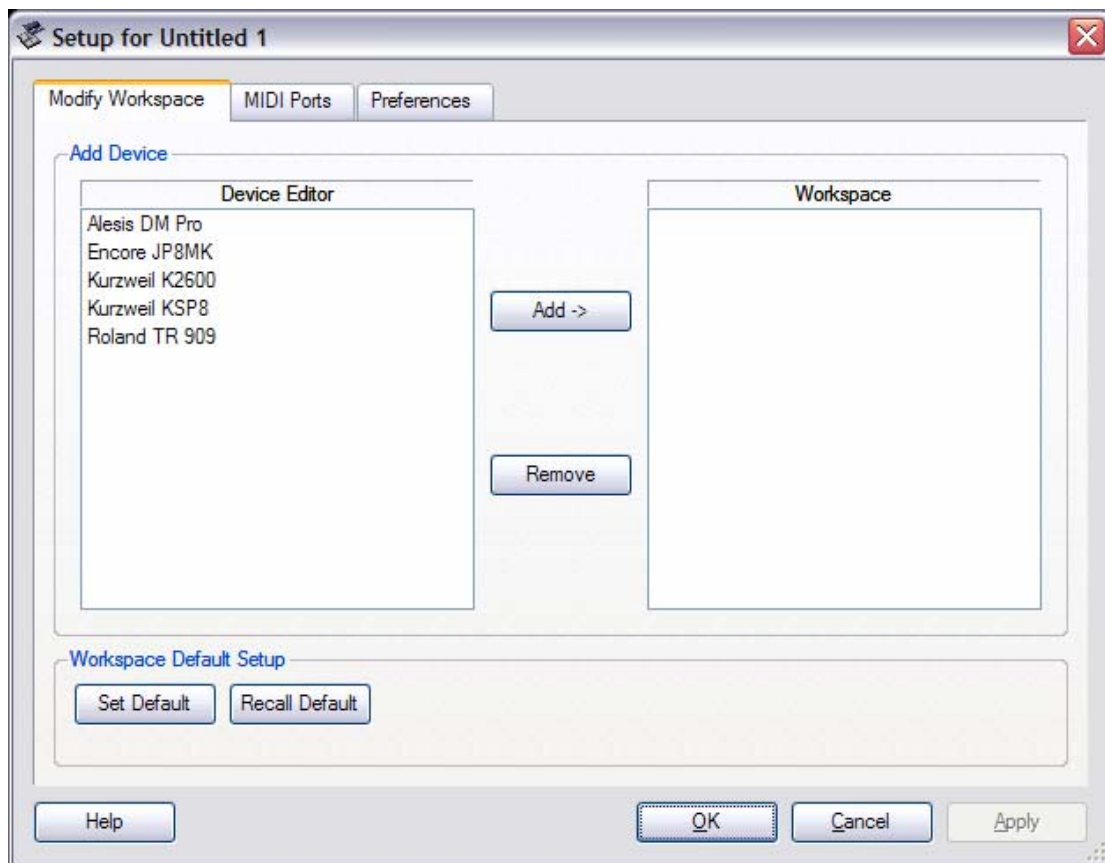
A notification window should appear informing you that the GTRC module has been successfully loaded.



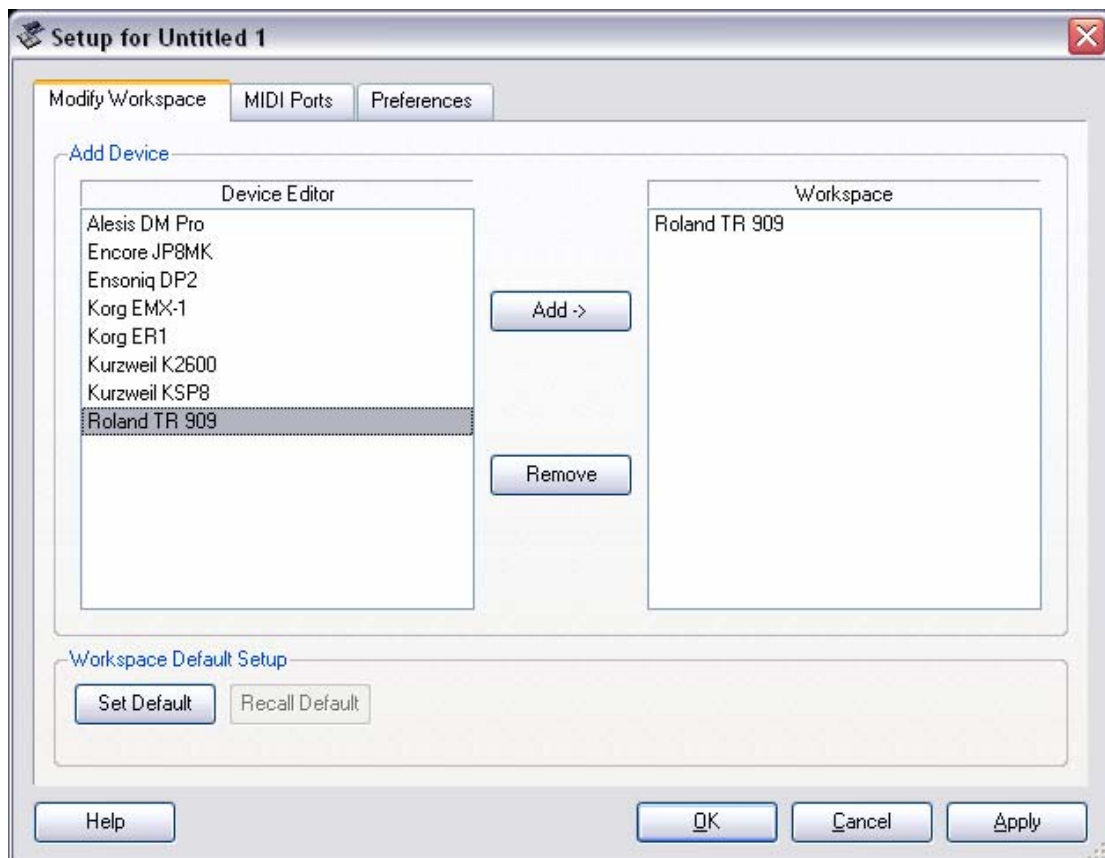
Close the GTRC Manager, or load other modules.

Configuring Studio Connections

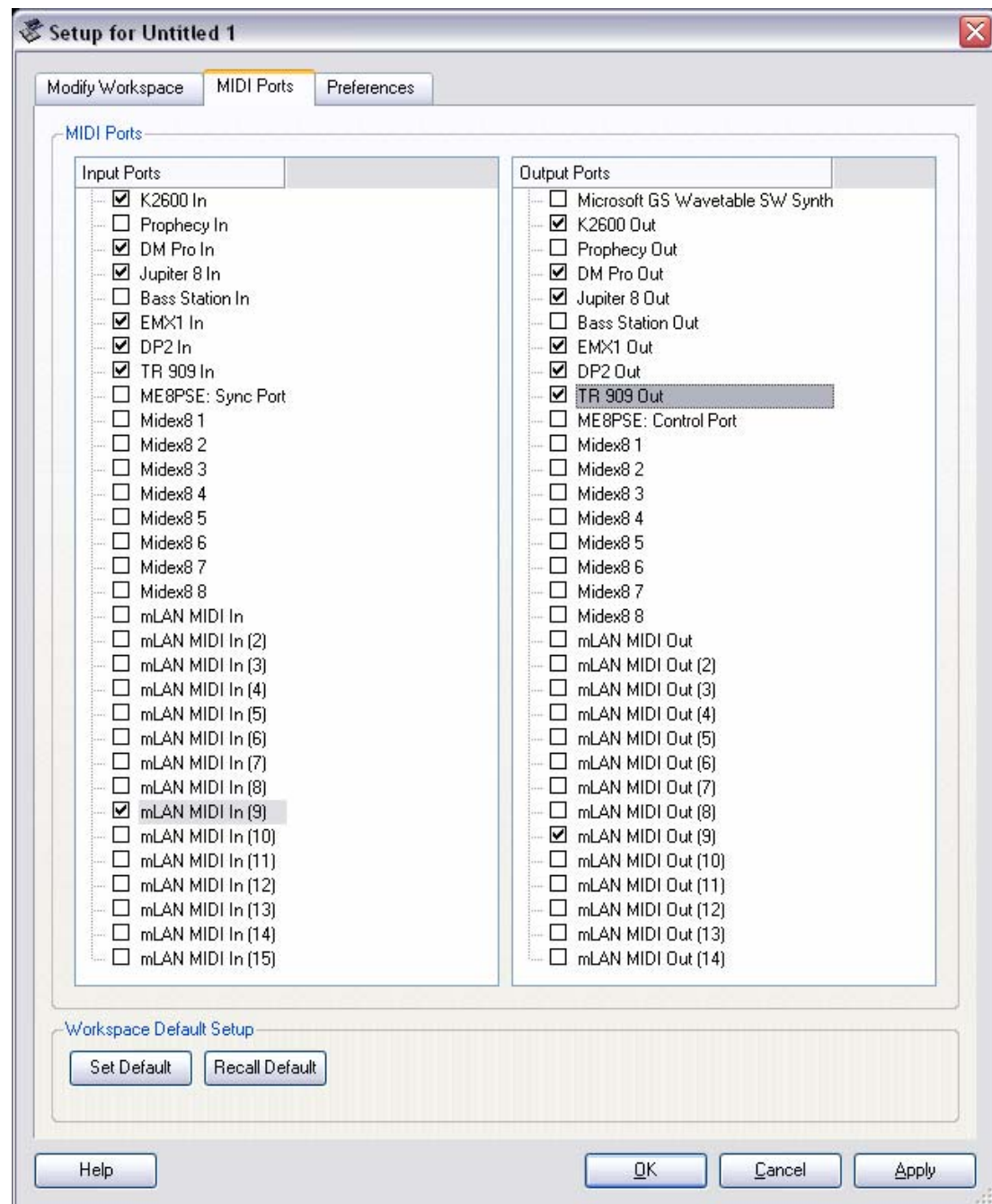
Open Studio Manager *Start -> Programs -> YAMAHA Studio Manager -> Studio Manager* (or from within Cubase SX3 select *Devices -> Studio Connections*).



Select Roland TR-909 and Click Add ->



Click MIDI Ports



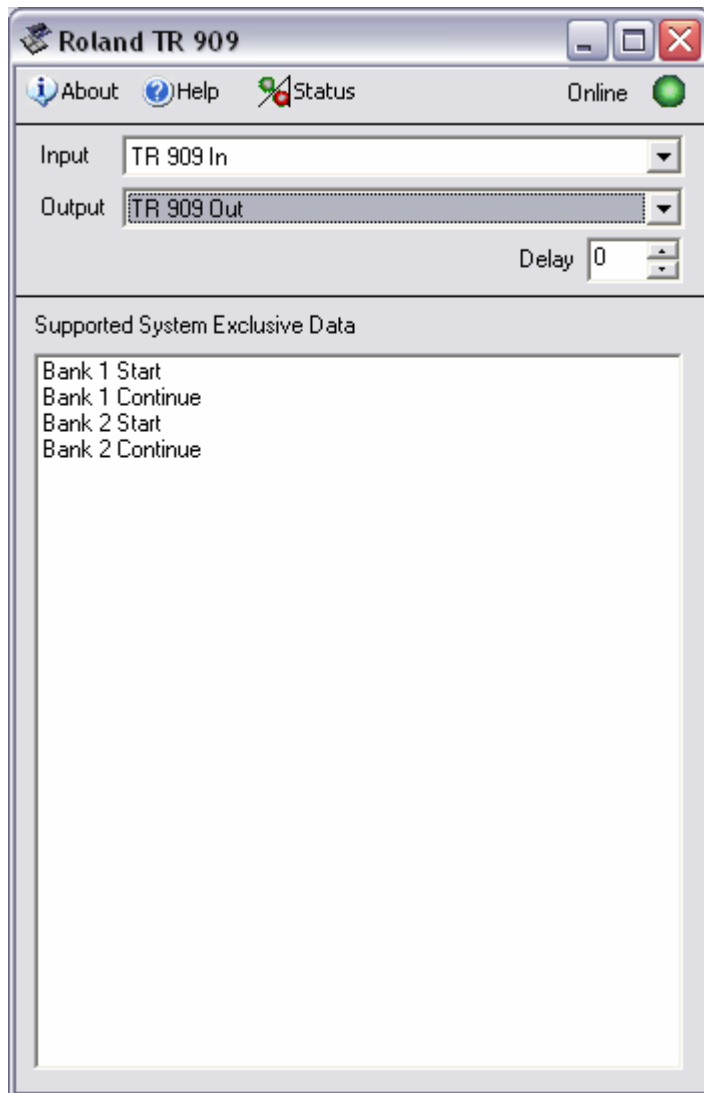
(For the Studio Manager Standalone application only) Select the MIDI Ports that connect to the TR 909's MIDI IN and MIDI OUT ports, and the MIDI Ports required.

The MIDI Ports selected here are the only MIDI Ports that will be available from within Studio Manager when each Studio Connections Modules are set.

Select OK



Double Click the TR 909 Icon (Picture)



Select the Input and Output MIDI Ports that correspond to the TR 909. The delay parameter is useful if you ever have any problems with corrupted loads into the TR 909. Increasing the Delay parameter will slow down the MIDI stream when it reloads. You shouldn't need to adjust this. Delays of 150 ms between MIDI messages has been added internally, and the TR 909 has been tested and found to operate well at this rate.

Once the Input and Output ports are selected, the Offline will change to Online, and the light will change to green. Alternatively the status can be updated by clicking on the Status Icon.

The *Supported System Exclusive Data* lists all of the individual synchronizations available in this module.

Close this window once it is Online

Using Studio Manager

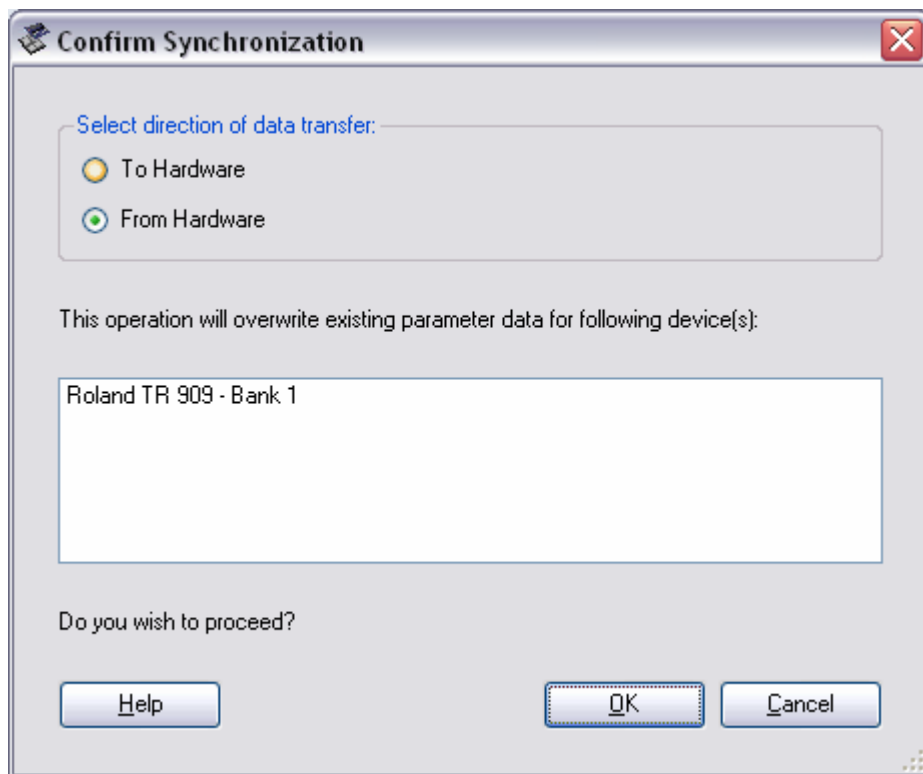
Right click the TR 909 and select *Configure Total Recall*.



Select the bank that you wish to dump. This should correspond to the bank selected from the front panel of the TR 909. You must change banks manually using Shift+Bank button on the 909.

Ensure that your TR 909 is in Track Play Mode, and that the sequencer is stopped. Turning the 909 off and then on again is the simplest way of achieving this.

Right Click the TR 909 Icon and Select *Synchronize*.



Select *From Hardware* to receive the data from the TR 909, and *To Hardware* to load data to the TR 909. Press OK to start the Synchronization.

Note that you can only dump 1 bank at a time using this module. You must manually change the bank between dumps, or you will overwrite the wrong bank (though this is a useful way to move data between banks).

Use the File Menu to Save the Studio Manager Data, which can be reopened, in order to resynchronize the TR 909.

If this is used from within Cubase SX3, then the data will be saved within the Cubase Project. Studio Manager can be set to reload the data automatically by selecting the option within the Preferences Tab during the Module Configuration, above.

Synchronizations

Bank 1 – saves all tracks and patterns stored in Bank I

Bank 2 – saves all tracks and patterns stored in Bank II

Final Comments

Please check back at <http://godlike.com.au/index.php?id=gtrc> for new versions. Any problems or comments are welcome at the Contact Us Page.

This GTRC module was authored by The Puppeteer and is proudly supported by [Godlike Productions](http://godlike.com.au).

Roland, TR 909, Yamaha, Studio Connections, Studio Manager, Cubase and GTRC are products, names and/or trademarks. None of the company's that own or are associated with the terms in this document or Godlike Productions warrant that this product is fit for purpose or error free. While all care has been taken by the author, this software is provided As-Is and no responsibility whatsoever will be accepted for loss or damage of any kind.

This module may not be retransmitted, copied, sold, given away or otherwise transferred without the express written permission of the author. It is provided for free, so if anyone wants a copy, please provide them with the links above, where they can download it themselves.

Revision History

1.0.e - Released 19 Feb 2008

=====

Fixed compatibility issue with GTRC 1.03. Automated bank change messages are not supported by GTRC

For GTRC, the bank change command cannot be transmitted. To overcome this, you will need to right click the 909 icon and select a single bank at a time. Use the tR 909's front panel to change banks and then do the dump of the other bank separately.

1.0.d

=====

Added support for second bank

1.0.c

=====

Made SYSEX Transfer more reliable

1.0.b - Released

=====

Supports Single Bank Dump

1.0.a

=====

Non-working Alpha